

Product datasheet for **AP51652PU-N**

FGD6 (C-term) Rabbit Polyclonal Antibody

Product data:

Product Type:	Primary Antibodies
Applications:	IHC, WB
Recommended Dilution:	ELISA: 1/1000. Western Blot: 1/100 - 1/500. Immunohistochemistry.
Reactivity:	Human
Host:	Rabbit
Isotype:	Ig
Clonality:	Polyclonal
Immunogen:	KLH conjugated synthetic peptide between 1331-1359 amino acids from the C-terminal region of human FGD6
Specificity:	This antibody reacts to FGD6.
Formulation:	PBS State: Aff - Purified State: Liquid purified Ig fraction Preservative: 0.09% (W/V) sodium azide
Concentration:	lot specific
Purification:	Affinity chromatography on Protein A
Conjugation:	Unconjugated
Storage:	Store the antibody undiluted at 2-8°C for one month or (in aliquots) at -20°C for longer. Avoid repeated freezing and thawing.
Stability:	Shelf life: one year from despatch.
Predicted Protein Size:	160816 Da
Gene Name:	FYVE, RhoGEF and PH domain containing 6
Database Link:	Entrez Gene 55785 Human Q6ZV73

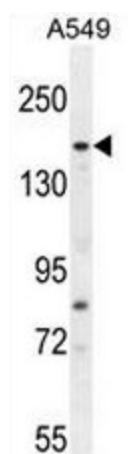


[View online »](#)

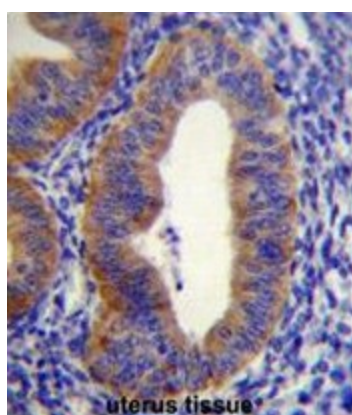
Background: Component of clathrin-coated pits and vesicles, that may link the endocytic machinery to the actin cytoskeleton. Binds 3-phosphoinositides (via ENTH domain). May act through the ENTH domain to promote cell survival by stabilizing receptor tyrosine kinases following ligand-induced endocytosis.

Synonyms: KIAA1362, ZFYVE24

Product images:



FGD6 Antibody (C-term) western blot analysis in A549 cell line lysates (35ug/lane). This demonstrates the FGD6 antibody detected the FGD6 protein (arrow).



FGD6 Antibody (C-term) immunohistochemistry analysis in formalin fixed and paraffin embedded human uterus tissue followed by peroxidase conjugation of the secondary antibody and DAB staining. This data demonstrates the use of FGD6 Antibody (C-term) for immunohistochemistry. Clinical relevance has not been evaluated.