

## Product datasheet for **AP51649PU-N**

### **GPR40 (FFAR1) (C-term) Rabbit Polyclonal Antibody**

#### **Product data:**

Product Type:	Primary Antibodies
Applications:	WB
Recommended Dilution:	<b>ELISA:</b> 1/1000. <b>Western Blot:</b> 1/100 - 1/500.
Reactivity:	Human
Host:	Rabbit
Isotype:	Ig
Clonality:	Polyclonal
Immunogen:	KLH conjugated synthetic peptide between 280-300 amino acids from the C-terminal region of human FFAR1
Specificity:	This antibody reacts to FFAR1.
Formulation:	PBS State: Aff - Purified State: Liquid purified Ig fraction Preservative: 0.09% (W/V) sodium azide
Concentration:	lot specific
Purification:	Affinity chromatography on Protein A
Conjugation:	Unconjugated
Storage:	Store the antibody undiluted at 2-8°C for one month or (in aliquots) at -20°C for longer. Avoid repeated freezing and thawing.
Stability:	Shelf life: one year from despatch.
Predicted Protein Size:	31457 Da
Gene Name:	free fatty acid receptor 1
Database Link:	<a href="#">Entrez Gene 2864 Human</a> <a href="#">O14842</a>



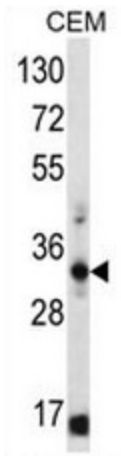
[View online »](#)

**Background:** This gene encodes a member of the GP40 family of G protein-coupled receptors that are clustered together on chromosome 19. The encoded protein is a receptor for medium and long chain free fatty acids and may be involved in the metabolic regulation of insulin secretion. Polymorphisms in this gene may be associated with type 2 diabetes.

**Synonyms:** Free fatty acid receptor 1, G-protein coupled receptor 40

**Protein Families:** Druggable Genome, GPCR, Transmembrane

**Product images:**



FFAR1 Antibody (C-term) western blot analysis in CEM cell line lysates (35ug/lane). This demonstrates the FFAR1 antibody detected the FFAR1 protein (arrow).