

## Product datasheet for **AP51645PU-N**

### IRTA2 (FCRL5) (Center) Rabbit Polyclonal Antibody

#### Product data:

Product Type:	Primary Antibodies
Applications:	WB
Recommended Dilution:	<b>ELISA:</b> 1/1000. <b>Western Blot:</b> 1/100 - 1/500.
Reactivity:	Human
Host:	Rabbit
Isotype:	Ig
Clonality:	Polyclonal
Immunogen:	KLH conjugated synthetic peptide between 301-331 amino acids from the Central region of human FCRL5
Specificity:	This antibody reacts to FCRL5.
Formulation:	PBS State: Aff - Purified State: Liquid purified Ig fraction Preservative: 0.09% (W/V) sodium azide
Concentration:	lot specific
Purification:	Affinity chromatography on Protein A
Conjugation:	Unconjugated
Storage:	Store the antibody undiluted at 2-8°C for one month or (in aliquots) at -20°C for longer. Avoid repeated freezing and thawing.
Stability:	Shelf life: one year from despatch.
Predicted Protein Size:	66kd Isoform 4. 106437 Da
Gene Name:	Fc receptor like 5
Database Link:	<a href="#">Entrez Gene 83416 Human Q96RD9</a>



[View online »](#)

**Background:**

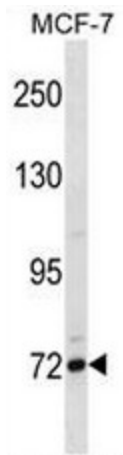
FCRL5 is a member of the immunoglobulin receptor superfamily and the Fc-receptor like family. This gene and several other Fc receptor-like gene members are clustered on the long arm of chromosome 1. The encoded protein is a single-pass type I membrane protein and contains 8 immunoglobulin-like C2-type domains. This gene is implicated in B cell development and lymphomagenesis. Alternatively spliced transcript variants encoding different isoforms have been identified.

**Synonyms:**

FcR-like protein 5, FcRL-5, FCRH5, IRTA2, BXMAS1

**Protein Families:**

Transmembrane

**Product images:**

FCRL5 Antibody (Center) western blot analysis in MCF-7 cell line lysates (35ug/lane). This demonstrates the FCRL5 antibody detected the FCRL5 protein (arrow).