

Product datasheet for **AP51644PU-N**

FCRL4 (C-term) Rabbit Polyclonal Antibody

Product data:

Product Type:	Primary Antibodies
Applications:	FC, WB
Recommended Dilution:	Western Blot: 1/1000. Flow Cytometry: 1/10 - 1/50.
Reactivity:	Human
Host:	Rabbit
Isotype:	Ig
Clonality:	Polyclonal
Immunogen:	KLH conjugated synthetic peptide between 480 - 507 amino acids from the C-terminal region of human FCRL4
Specificity:	This antibody reacts to FCRL4.
Formulation:	PBS State: Aff - Purified State: Liquid purified Ig fraction Preservative: 0.09% (W/V) sodium azide
Concentration:	lot specific
Purification:	Affinity chromatography on Protein A followed by peptide affinity purification.
Conjugation:	Unconjugated
Storage:	Store the antibody undiluted at 2-8°C for one month or (in aliquots) at -20°C for longer. Avoid repeated freezing and thawing.
Stability:	Shelf life: one year from despatch.
Predicted Protein Size:	57224 Da
Gene Name:	Fc receptor like 4
Database Link:	Entrez Gene 83417 Human Q96PJ5



[View online »](#)

Background:

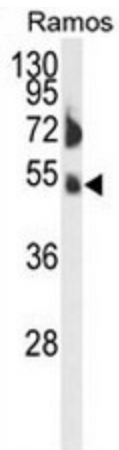
This gene encodes a member of the immunoglobulin receptor superfamily and is one of several Fc receptor-like glycoproteins clustered on the long arm of chromosome 1. The encoded protein has four extracellular C2-type immunoglobulin domains, a transmembrane domain and a cytoplasmic domain that contains three immune-receptor tyrosine-based inhibitory motifs. This protein may play a role in the function of memory B-cells in the epithelia. Aberrations in the chromosomal region encoding this gene are associated with non-Hodgkin lymphoma and multiple myeloma.

Synonyms:

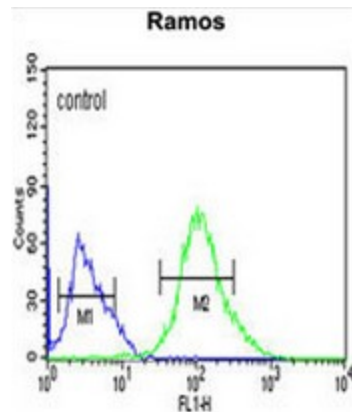
Fc receptor-like protein 4, FcR-like protein 4, FCRH4, IFGP2, IRTA1

Protein Families:

Transmembrane

Product images:


Western blot analysis of FCRL4 Antibody (C-term) in Ramos cell line lysates (35ug/lane). FCRL4 (arrow) was detected using the purified Pab.



FCRL4 Antibody (C-term) flow cytometric analysis of Ramos cells (right histogram) compared to a negative control cell (left histogram). FITC-conjugated goat-anti-rabbit secondary antibodies were used for the analysis.