

Product datasheet for **AP51638PU-N**

FBXW8 (Center) Rabbit Polyclonal Antibody

Product data:

Product Type:	Primary Antibodies
Applications:	FC, IHC, WB
Recommended Dilution:	ELISA: 1/1000. Western Blot: 1/100 - 1/500. Immunohistochemistry on paraffin sections: 1/50 - 1/100.
Reactivity:	Human, Mouse
Host:	Rabbit
Isotype:	Ig
Clonality:	Polyclonal
Immunogen:	KLH conjugated synthetic peptide between 273-303 amino acids from the Central region of human FBXW8
Specificity:	This antibody reacts to FBXW8.
Formulation:	PBS State: Aff - Purified State: Liquid purified Ig fraction Preservative: 0.09% (W/V) sodium azide
Concentration:	lot specific
Purification:	Affinity chromatography on Protein A
Conjugation:	Unconjugated
Storage:	Store the antibody undiluted at 2-8°C for one month or (in aliquots) at -20°C for longer. Avoid repeated freezing and thawing.
Stability:	Shelf life: one year from despatch.
Predicted Protein Size:	67394 Da
Gene Name:	F-box and WD repeat domain containing 8
Database Link:	Entrez Gene 231672 Mouse Entrez Gene 26259 Human Q8N3Y1



[View online »](#)

Background:

This gene encodes a member of the F-box protein family, members of which are characterized by an approximately 40 amino acid motif, the F-box. The F-box proteins constitute one of the four subunits of ubiquitin protein ligase complex called SCFs (SKP1-cullin-F-box), which function in phosphorylation-dependent ubiquitination. The F-box proteins are divided into three classes: Fbws containing WD-40 domains, Fbls containing leucine-rich repeats, and Fbxs containing either different protein-protein interaction modules or no recognizable motifs. The protein encoded by this gene contains a WD-40 domain, in addition to an F-box motif, so it belongs to the Fbw class. Alternatively spliced transcript variants encoding distinct isoforms have been identified for this gene.

Synonyms:

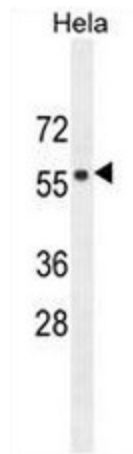
F-box only protein 29, FBW6, FBW8, FBX29, FBXO29, FBXW6

Protein Families:

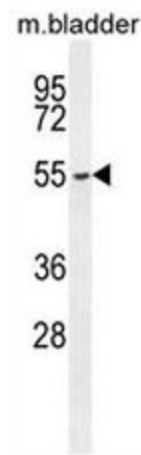
Druggable Genome

Protein Pathways:

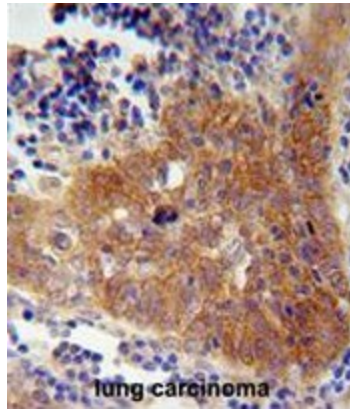
Ubiquitin mediated proteolysis

Product images:

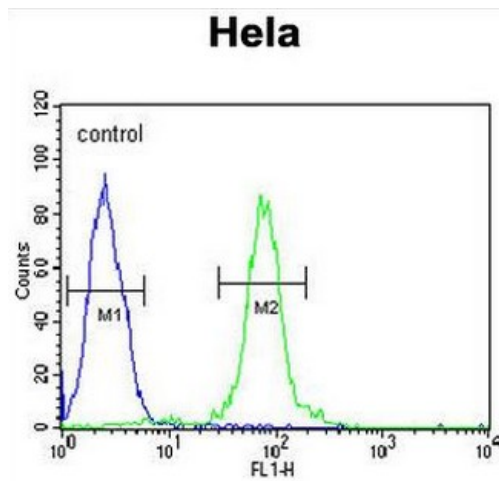
FBXW8 Antibody (Center) western blot analysis in HeLa cell line lysates (35ug/lane). This demonstrates the FBXW8 antibody detected the FBXW8 protein (arrow).



FBXW8 Antibody (Center) western blot analysis in mouse bladder tissue lysates (35ug/lane). This demonstrates the FBXW8 antibody detected the FBXW8 protein (arrow).



FBXW8 Antibody (Center) immunohistochemistry analysis in formalin fixed and paraffin embedded human lung carcinoma followed by peroxidase conjugation of the secondary antibody and DAB staining. This data demonstrates the use of the FBXW8 Antibody (Center) for immunohistochemistry. Clinical relevance has not been evaluated.



FBXW8 Antibody (Center) flow cytometric analysis of Hela cells (right histogram) compared to a negative control cell (left histogram). FITC-conjugated goat-anti-rabbit secondary antibodies were used for the analysis.