

Product datasheet for **AP51636PU-N**

FBXW12 (C-term) Rabbit Polyclonal Antibody

Product data:

Product Type:	Primary Antibodies
Applications:	FC, IHC, WB
Recommended Dilution:	ELISA: 1/1000. Western Blot: 1/100-1/500. Flow Cytometry: 1/10-1/50. Immunohistochemistry on Paraffin Sections: 1/50-1/100.
Reactivity:	Human
Host:	Rabbit
Isotype:	Ig
Clonality:	Polyclonal
Immunogen:	KLH conjugated synthetic peptide between 298-328 amino acids from the C-terminal region of Human FBXW12
Specificity:	This antibody recognizes Human FBXW12 (C-term).
Formulation:	PBS containing 0.09% (W/V) Sodium Azide as preservative State: Aff - Purified State: Liquid purified Ig fraction
Concentration:	lot specific
Purification:	Protein A column, followed by peptide affinity purification
Conjugation:	Unconjugated
Storage:	Store undiluted at 2-8°C for one month or (in aliquots) at -20°C for longer. Avoid repeated freezing and thawing.
Stability:	Shelf life: one year from despatch.
Gene Name:	F-box and WD repeat domain containing 12
Database Link:	Entrez Gene 285231 Human Q6X9E4



[View online »](#)

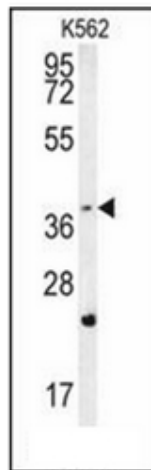
Background: Members of the F-box protein family, such as FBXW12, are characterized by an approximately 40-amino acid F-box motif. SCF complexes, formed by SKP1 (MIM 601434), cullin (see CUL1; MIM 603034), and F-box proteins, act as protein-ubiquitin ligases. F-box proteins interact with SKP1 through the F box, and they interact with ubiquitination targets through other protein interaction domains (Jin et al., 2004 [PubMed 15520277]). [supplied by OMIM].

Synonyms: FBW12, FBXO12, FBXO35, F-box only protein 35

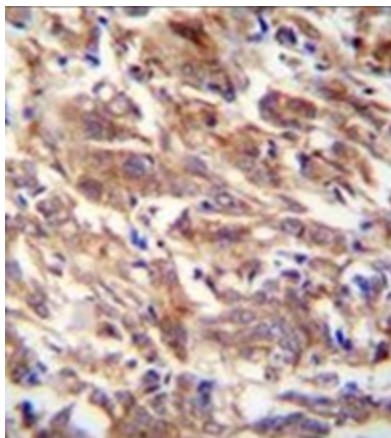
Note: **Molecular Weight:** 53056 Da

Protein Families: Druggable Genome

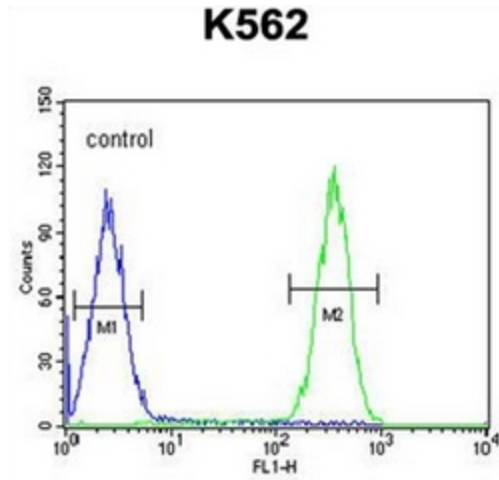
Product images:



Western blot analysis of FBXW12 Antibody (C-term) in K562 cell line lysates (35ug/lane). This demonstrates the FBXW12 antibody detected the FBXW12 protein (arrow).



Immunohistochemistry analysis in formalin fixed and paraffin embedded human breast carcinoma reacted with FBXW12 Antibody (C-term) followed by peroxidase conjugation of the secondary antibody and DAB staining.



Flow cytometric analysis of K562 cells using FBXW12 Antibody (C-term) (right histogram) compared to a negative control cell (left histogram). FITC-conjugated goat-anti-rabbit secondary antibodies were used for the analysis.