

## Product datasheet for **AP51632PU-N**

### **FBXO46 (C-term) Rabbit Polyclonal Antibody**

#### **Product data:**

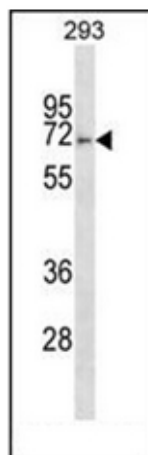
Product Type:	Primary Antibodies
Applications:	WB
Recommended Dilution:	<b>ELISA:</b> 1/1000. <b>Western Blot:</b> 1/100-1/500.
Reactivity:	Human
Host:	Rabbit
Isotype:	Ig
Clonality:	Polyclonal
Immunogen:	KLH conjugated synthetic peptide between 583-612 amino acids from the C-terminal region of human FBXO46
Specificity:	This antibody recognizes Human FBXO46 (C-term).
Formulation:	PBS containing 0.09% (W/V) Sodium Azide as preservative State: Aff - Purified State: Liquid purified Ig fraction
Concentration:	lot specific
Purification:	Affinity Chromatography on Protein A
Conjugation:	Unconjugated
Storage:	Store undiluted at 2-8°C for one month or (in aliquots) at -20°C for longer. Avoid repeated freezing and thawing.
Stability:	Shelf life: one year from despatch.
Gene Name:	F-box protein 46
Database Link:	<a href="#">Entrez Gene 23403 Human Q6PJ61</a>
Background:	Substrate-recognition component of the SCF (SKP1-CUL1-F-box protein)-type E3 ubiquitin ligase complex (By similarity).
Synonyms:	F-box only protein 46, FBX46, FBXO34L
Note:	<b>Molecular Weight:</b> 69031 Da



[View online »](#)

Protein Families: Druggable Genome

### Product images:



Western blot analysis of FBXO46 Antibody (C-term) in 293 cell line lysates (35ug/lane). This demonstrates the FBXO46 antibody detected the FBXO46 protein (arrow)