

## Product datasheet for **AP51622PU-N**

### **FBXL5 (N-term) Rabbit Polyclonal Antibody**

#### **Product data:**

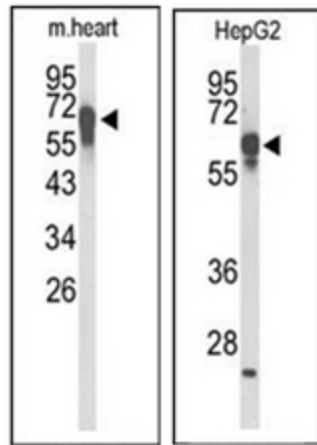
|                       |  |
|-----------------------|--|
| Product Type:         | Primary Antibodies   |
| Applications:         | FC, IHC, WB  |
| Recommended Dilution: | <b>ELISA:</b> 1/1000.<br><b>Western Blot:</b> 1/100-1/500.<br><b>Flow Cytometry:</b> 1/10-1/50.<br><b>Immunohistochemistry on Paraffin Sections:</b> 1/50-1/100. |
| Reactivity:           | Human, Mouse   |
| Host:                 | Rabbit   |
| Isotype:              | Ig   |
| Clonality:            | Polyclonal   |
| Immunogen:            | KLH conjugated synthetic peptide between 93~123 amino acids from the N-terminal region of Human FBXL5.   |
| Specificity:          | This antibody recognizes Human and Mouse FBXL5 (N-term).   |
| Formulation:          | PBS containing 0.09% (W/V) Sodium Azide as preservative<br>State: Aff - Purified<br>State: Liquid purified Ig fraction   |
| Concentration:        | lot specific   |
| Purification:         | Affinity Chromatography on Protein A   |
| Conjugation:          | Unconjugated   |
| Storage:              | Store undiluted at 2-8°C for one month or (in aliquots) at -20°C for longer.<br>Avoid repeated freezing and thawing.   |
| Stability:            | Shelf life: one year from despatch.  |
| Gene Name:            | F-box and leucine-rich repeat protein 5  |
| Database Link:        | <a href="#">Entrez Gene 26234 Human Q9UKA1</a>   |
| Synonyms:             | FBL4, FBL5, FLR1, p45SKP2-like protein   |
| Note:                 | <b>Molecular Weight:</b> 78,555 Da   |



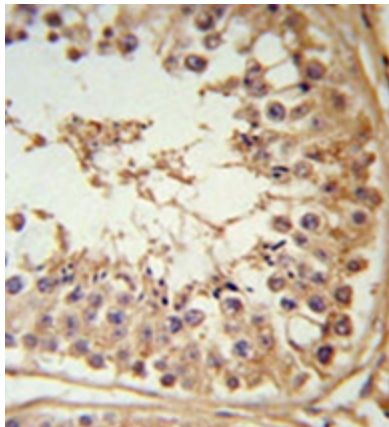
[View online »](#)

Protein Families: Druggable Genome

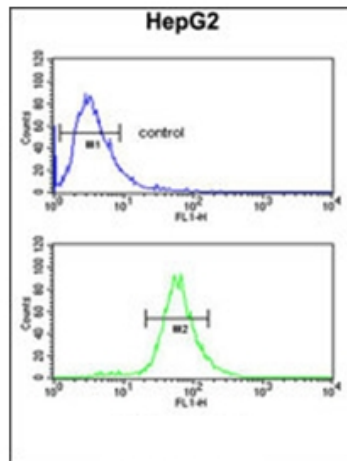
**Product images:**



Western blot analysis of FBXL5 Antibody (N-term) in mouse heart tissue lysates (Left) and HepG2 cell line lysates (Right) (35ug/lane). FBXL5 (arrow) was detected using the purified Pab.



Immunohistochemistry in formalin fixed and paraffin embedded testis tissue reacted with FBXL5 Antibody (N-term) followed by peroxidase conjugation of the secondary antibody and DAB staining.



Flow cytometric analysis of HepG2 cells using FBXL5 Antibody (N-term) (bottom histogram) compared to a negative control cell (top histogram). FITC-conjugated goat-anti-rabbit secondary antibodies were used for the analysis.