

Product datasheet for **AP51620PU-N**

KDM2B (N-term) Rabbit Polyclonal Antibody

Product data:

Product Type:	Primary Antibodies
Applications:	IHC, WB
Recommended Dilution:	ELISA: 1/1000. Western Blot: 1/100-1/500. Immunohistochemistry on Paraffin Sections: 1/50-1/100.
Reactivity:	Human, Mouse
Host:	Rabbit
Isotype:	Ig
Clonality:	Polyclonal
Immunogen:	KLH conjugated synthetic peptide between 1-30 amino acids from the N-terminal region of Human FBXL10b
Specificity:	This antibody recognizes Human and Mouse FBXL10b (N-term).
Formulation:	PBS containing 0.09% (W/V) Sodium Azide as preservative State: Aff - Purified State: Liquid purified Ig fraction
Concentration:	lot specific
Purification:	Affinity Chromatography on Protein A
Conjugation:	Unconjugated
Storage:	Store undiluted at 2-8°C for one month or (in aliquots) at -20°C for longer. Avoid repeated freezing and thawing.
Stability:	Shelf life: one year from despatch.
Gene Name:	lysine demethylase 2B
Database Link:	Entrez Gene 30841 Mouse Entrez Gene 84678 Human Q8NHM5



[View online »](#)

Background:

This gene encodes a member of the F-box protein family which is characterized by an approximately 40 amino acid motif, the F-box. The F-box proteins constitute one of the four subunits of ubiquitin protein ligase complex called SCFs (SKP1-cullin-F-box), which function in phosphorylation-dependent ubiquitination. The F-box proteins are divided into 3 classes: Fbws containing WD-40 domains, Fbls containing leucine-rich repeats, and Fbxs containing either different protein-protein interaction modules or no recognizable motifs. The protein encoded by this gene belongs to the Fbls class. Multiple alternatively spliced transcript variants have been found for this gene, but the full-length nature of some variants has not been determined.

Synonyms:

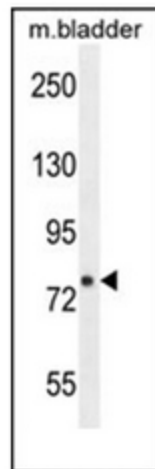
Uncharacterized protein,KDM2B

Note:

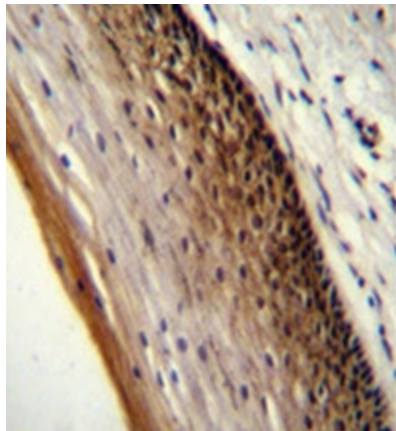
Molecular Weight: Isoform 74kd; 144769 Da

Protein Families:

Druggable Genome

Product images:

Western blot analysis of FBXL10b (N-term) in mouse bladder tissue lysates (35ug/lane). This demonstrates the FBXL10b antibody detected the FBXL10b protein (arrow).



Immunohistochemistry analysis in formalin fixed and paraffin embedded human cervical tissue reacted with FBXL10b (N-term) followed by peroxidase conjugation of the secondary antibody and DAB staining.