

Product datasheet for **AP51617PU-N**

FBRSL1 (C-term) Rabbit Polyclonal Antibody

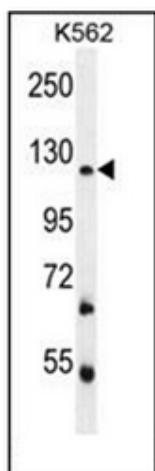
Product data:

Product Type:	Primary Antibodies
Applications:	FC, IHC, WB
Recommended Dilution:	ELISA: 1/1000. Western Blot: 1/100-1/500. Flow Cytometry: 1/10-1/50.
Reactivity:	Human
Host:	Rabbit
Isotype:	Ig
Clonality:	Polyclonal
Immunogen:	KLH conjugated synthetic peptide between 840-870 amino acids from the C-terminal region of Human FBRSL1
Specificity:	This antibody recognizes Human FBRSL1 (C-term).
Formulation:	PBS containing 0.09% (W/V) Sodium Azide as preservative State: Aff - Purified State: Liquid purified Ig fraction
Concentration:	lot specific
Purification:	Affinity Chromatography on Protein A
Conjugation:	Unconjugated
Storage:	Store undiluted at 2-8°C for one month or (in aliquots) at -20°C for longer. Avoid repeated freezing and thawing.
Stability:	Shelf life: one year from despatch.
Gene Name:	fibrosin like 1
Database Link:	Entrez Gene 57666 Human Q9HCM7
Synonyms:	Fibrosin-1-like protein,AUTS2L, KIAA1545, XTP9
Note:	Molecular Weight: 102876 Da

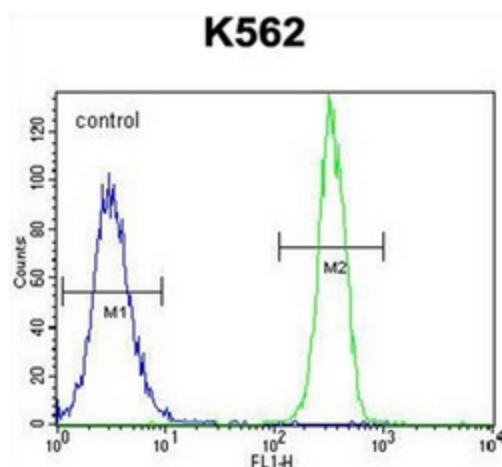


[View online »](#)

Product images:



Western blot analysis of FBRSL1 Antibody (C-term) in K562 cell line lysates (35ug/lane). This demonstrates the FBRSL1 antibody detected the FBRSL1 protein (arrow).



Flow cytometric analysis of K562 cells using FBRSL1 Antibody (C-term) (right histogram) compared to a negative control cell (left histogram). FITC-conjugated goat-anti-rabbit secondary antibodies were used for the analysis.