

Product datasheet for **AP51616PU-N**

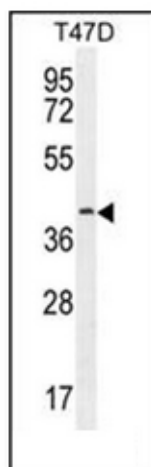
Fibulin 7 (FBLN7) (N-term) Rabbit Polyclonal Antibody

Product data:

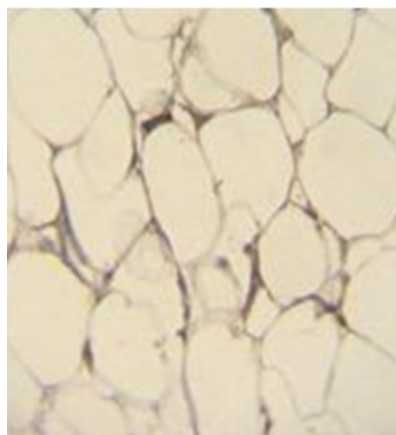
Product Type:	Primary Antibodies
Applications:	IHC, WB
Recommended Dilution:	ELISA: 1/1000. Western Blot: 1/100-1/500. Immunohistochemistry on Paraffin Sections: 1/50-1/100.
Reactivity:	Human
Host:	Rabbit
Isotype:	Ig
Clonality:	Polyclonal
Immunogen:	KLH conjugated synthetic peptide between 36-64 amino acids from the N-terminal region of human Fibulin-7.
Specificity:	This antibody recognizes Human Fibulin-7 (N-term).
Formulation:	PBS containing 0.09% (W/V) Sodium Azide as preservative State: Aff - Purified State: Liquid purified Ig fraction
Concentration:	lot specific
Purification:	Affinity Chromatography on Protein A
Conjugation:	Unconjugated
Storage:	Store undiluted at 2-8°C for one month or (in aliquots) at -20°C for longer. Avoid repeated freezing and thawing.
Stability:	Shelf life: one year from despatch.
Gene Name:	fibulin 7
Database Link:	Entrez Gene 129804 Human Q53RD9
Synonyms:	FBLN7, TM14
Note:	Molecular Weight: 47376 Da
Protein Families:	Druggable Genome



[View online »](#)

Product images:

Western blot analysis of Fibulin-7 Antibody (N-term) in T47D cell line lysates (35ug/lane). This demonstrates the FBLN7 antibody detected the FBLN7 protein (arrow).



Immunohistochemistry analysis in formalin fixed and paraffin embedded human adipose tissue reacted with Fibulin-7 Antibody (N-term) followed by peroxidase conjugation of the secondary antibody and DAB staining.