

Product datasheet for **AP51615PU-N**

Fibulin 1 (FBLN1) (C-term) Rabbit Polyclonal Antibody

Product data:

Product Type:	Primary Antibodies
Applications:	IHC, WB
Recommended Dilution:	Western Blot: 1/1000. Immunohistochemistry on Paraffin Sections: 1/10-1/50.
Reactivity:	Human, Mouse
Host:	Rabbit
Isotype:	Ig
Clonality:	Polyclonal
Immunogen:	KLH conjugated synthetic peptide between 622-650 amino acids from the C-terminal region of Human Fibulin-1.
Specificity:	This antibody recognizes Human and Mouse Fibulin-1 (C-term).
Formulation:	PBS containing 0.09% (W/V) Sodium Azide as preservative State: Aff - Purified State: Liquid purified Ig fraction
Concentration:	lot specific
Purification:	Affinity Chromatography on Protein A
Conjugation:	Unconjugated
Storage:	Store undiluted at 2-8°C for one month or (in aliquots) at -20°C for longer. Avoid repeated freezing and thawing.
Stability:	Shelf life: one year from despatch.
Gene Name:	fibulin 1
Database Link:	Entrez Gene 14114 Mouse Entrez Gene 2192 Human P23142
Background:	Fibulin 1 is a secreted glycoprotein that becomes incorporated into a fibrillar extracellular matrix. Calcium-binding is apparently required to mediate its binding to laminin and nidogen. It mediates platelet adhesion via binding fibrinogen. Four splice variants which differ in the 3' end have been identified. Each variant encodes a different isoform, but no functional distinctions have been identified among the four variants.



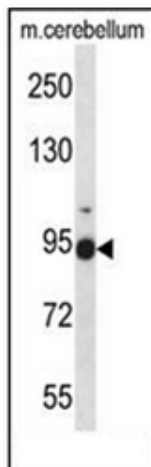
[View online »](#)

Synonyms: FIBL-1, FBLN1, PP213

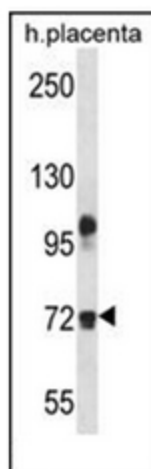
Note: **Molecular Weight:** 77214 Da

Protein Families: Secreted Protein

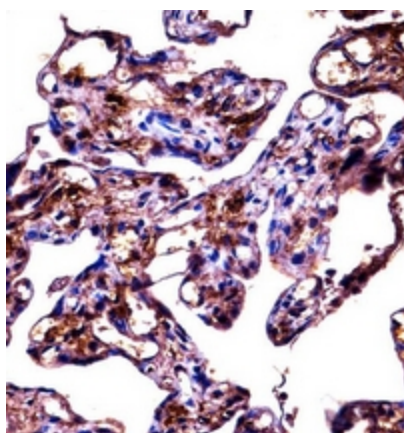
Product images:



Western blot analysis of Fibulin-1 Antibody (C-term) in mouse cerebellum tissue lysates (35ug/lane). This demonstrates the FBLN1 antibody detected the FBLN1 protein (arrow).



Western blot analysis of Fibulin-1 Antibody (C-term) in human placenta tissue lysates (35ug/lane). This demonstrates the FBLN1 antibody detected the FBLN1 protein (arrow).



Immunohistochemistry analysis in formalin fixed and paraffin embedded human placenta tissue reacted with Fibulin-1 Antibody (C-term) followed by peroxidase conjugation of the secondary antibody and DAB staining.