

Product datasheet for **AP51614PU-N**

FBLIM1 (C-term) Rabbit Polyclonal Antibody

Product data:

Product Type:	Primary Antibodies
Applications:	IHC, WB
Recommended Dilution:	ELISA: 1/1000. Western Blot: 1/100-1/500. Immunohistochemistry on Paraffin Sections: 1/10-1/50.
Reactivity:	Human
Host:	Rabbit
Isotype:	Ig
Clonality:	Polyclonal
Immunogen:	KLH conjugated synthetic peptide between 301-331 amino acids from the C-terminal region of Human FBLIM1
Specificity:	This antibody recognizes Human FBLIM1 (C-term).
Formulation:	PBS containing 0.09% (W/V) Sodium Azide as preservative State: Aff - Purified State: Liquid purified Ig fraction
Concentration:	lot specific
Purification:	Affinity Chromatography on Protein A
Conjugation:	Unconjugated
Storage:	Store undiluted at 2-8°C for one month or (in aliquots) at -20°C for longer. Avoid repeated freezing and thawing.
Stability:	Shelf life: one year from despatch.
Gene Name:	filamin binding LIM protein 1
Database Link:	Entrez Gene 54751 Human Q8WUP2



[View online »](#)

Background:

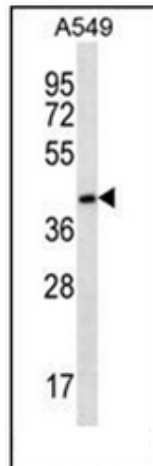
This gene encodes a protein with an N-terminal filamin-binding domain, a central proline-rich domain, and, multiple C-terminal LIM domains. This protein localizes at cell junctions and may link cell adhesion structures to the actin cytoskeleton. This protein may be involved in the assembly and stabilization of actin-filaments and likely plays a role in modulating cell adhesion, cell morphology and cell motility. This protein also localizes to the nucleus and may affect cardiomyocyte differentiation after binding with the CSX/NKX2-5 transcription factor. Alternative splicing results in multiple transcript variants encoding different isoforms.

Synonyms:

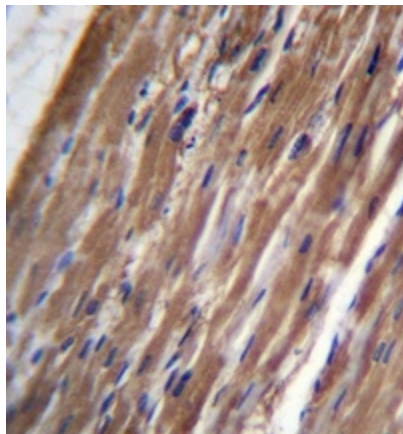
FBLP-1, FBLP1, Migfilin, MIG2-interacting protein

Note:

Molecular Weight: 40670 Da

Product images:

Western blot analysis of FBLIM1 Antibody (C-term) in A549 cell line lysates (35ug/lane). This demonstrates the FBLIM1 antibody detected the FBLIM1 protein (arrow).



Immunohistochemistry analysis in formalin fixed and paraffin embedded human heart tissue reacted with FBLIM1 Antibody (C-term) followed by peroxidase conjugation of the secondary antibody and DAB staining.