

## Product datasheet for **AP51588PU-N**

### **DIPK1B (N-term) Rabbit Polyclonal Antibody**

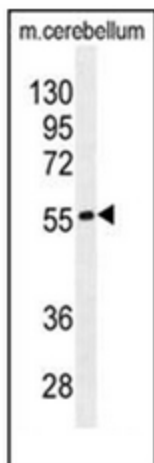
#### Product data:

Product Type:	Primary Antibodies
Applications:	IHC, WB
Recommended Dilution:	<b>ELISA:</b> 1/1000. <b>Western Blot:</b> 1/100-1/500. <b>Immunohistochemistry on Paraffin Sections:</b> 1/50-1/100.
Reactivity:	Human, Mouse
Host:	Rabbit
Isotype:	Ig
Clonality:	Polyclonal
Immunogen:	KLH conjugated synthetic peptide between 114-144 amino acids from the N-terminal region of human FAM69B
Specificity:	This antibody recognizes Human and Mouse FAM69B (N-term).
Formulation:	PBS containing 0.09% (W/V) Sodium Azide as preservative State: Aff - Purified State: Liquid purified Ig fraction
Concentration:	lot specific
Purification:	Affinity Chromatography on Protein A
Conjugation:	Unconjugated
Storage:	Store undiluted at 2-8°C for one month or (in aliquots) at -20°C for longer. Avoid repeated freezing and thawing.
Stability:	Shelf life: one year from despatch.
Gene Name:	family with sequence similarity 69 member B
Database Link:	<a href="#">Entrez Gene 138311 Human Q5VUD6</a>
Synonyms:	Protein ,C9orf136
Note:	<b>Molecular Weight:</b> 48583 Da
Protein Families:	Transmembrane

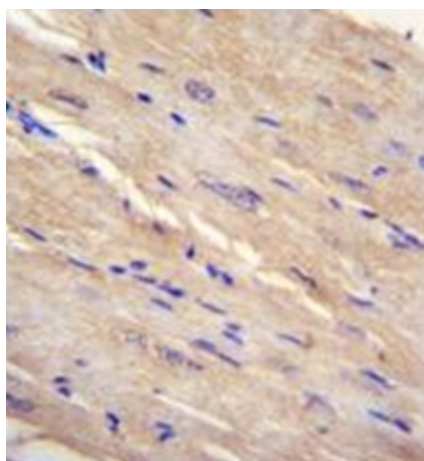


[View online »](#)

## Product images:



Western blot analysis of FAM69B Antibody (N-term) in mouse cerebellum tissue lysates (35ug/lane). This demonstrates the FAM69B antibody detected the FAM69B protein (arrow).



Formalin fixed and paraffin embedded human m.heart tissue reacted with FAM69B Antibody (N-term) followed by peroxidase conjugation of the secondary antibody and DAB staining.