

## Product datasheet for **AP51518PU-N**

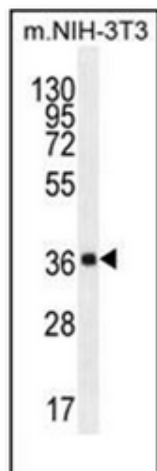
### **FAM108C1 (ABHD17C) (Center) Rabbit Polyclonal Antibody**

#### Product data:

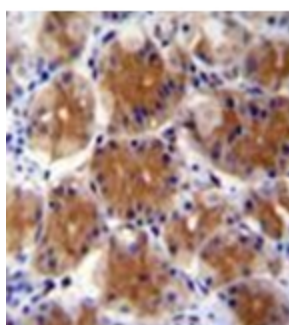
Product Type:	Primary Antibodies
Applications:	IHC, WB
Recommended Dilution:	<b>ELISA:</b> 1/1000. <b>Western Blot:</b> 1/100-1/500. <b>Immunohistochemistry on Paraffin Sections:</b> 1/50-1/100.
Reactivity:	Human, Mouse
Host:	Rabbit
Isotype:	Ig
Clonality:	Polyclonal
Immunogen:	KLH conjugated synthetic peptide between 99-130 amino acids from the Central region of human FAM108C1
Specificity:	This antibody recognizes Human and Mouse FAM108C1 (Center).
Formulation:	PBS containing 0.09% (W/V) Sodium Azide as preservative State: Aff - Purified State: Liquid purified Ig fraction
Concentration:	lot specific
Purification:	Affinity Chromatography on Protein A
Conjugation:	Unconjugated
Storage:	Store undiluted at 2-8°C for one month or (in aliquots) at -20°C for longer. Avoid repeated freezing and thawing.
Stability:	Shelf life: one year from despatch.
Gene Name:	abhydrolase domain containing 17C
Database Link:	<a href="#">Entrez Gene 70178 Mouse</a> <a href="#">Entrez Gene 58489 Human</a> <a href="#">Q6PCB6</a>
Synonyms:	FAM108C1 Alpha/beta hydrolase domain-containing protein 17C
Note:	<b>Molecular Weight:</b> 35831 Da
Protein Families:	Protease



[View online »](#)

**Product images:**

Western blot analysis of FAM108C1 Antibody (Center) in mouse NIH-3T3 cell line lysates (35ug/lane). This demonstrates the FAM108C1 antibody detected the FAM108C1 protein (arrow).



Formalin fixed and paraffin embedded human stomach tissue reacted FAM108C1 Antibody (Center) followed by peroxidase conjugation of the secondary antibody and DAB staining.