

Product datasheet for **AP51511PU-N**

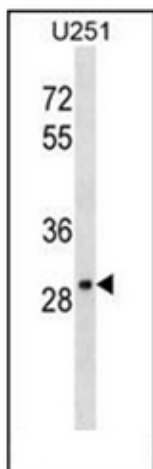
FAIM2 (Center) Rabbit Polyclonal Antibody

Product data:

Product Type:	Primary Antibodies
Applications:	WB
Recommended Dilution:	ELISA: 1/1000. Western Blot: 1/100-1/500.
Reactivity:	Human
Host:	Rabbit
Isotype:	Ig
Clonality:	Polyclonal
Immunogen:	KLH conjugated synthetic peptide between 75-105 amino acids from the Central region of human FAIM2.
Specificity:	This antibody recognizes Human FAIM2 (Center).
Formulation:	PBS containing 0.09% (W/V) Sodium Azide as preservative State: Aff - Purified State: Liquid purified Ig fraction
Concentration:	lot specific
Purification:	Affinity Chromatography on Protein A
Conjugation:	Unconjugated
Storage:	Store undiluted at 2-8°C for one month or (in aliquots) at -20°C for longer. Avoid repeated freezing and thawing.
Stability:	Shelf life: one year from despatch.
Gene Name:	Fas apoptotic inhibitory molecule 2
Database Link:	Entrez Gene 23017 Human Q9BWQ8
Background:	FAIM2 protects cells uniquely from Fas-induced apoptosis.
Synonyms:	Protein lifeguard, KIAA0950, LFG, TMBIM2
Note:	Molecular Weight: 35110 Da
Protein Families:	Transmembrane



[View online »](#)

Product images:

Western blot analysis of FAIM2 Antibody (Center) in U251 cell line lysates (35ug/lane). This demonstrates the FAIM2 antibody detected the FAIM2 protein (arrow).