

Product datasheet for **AP51510PU-N**

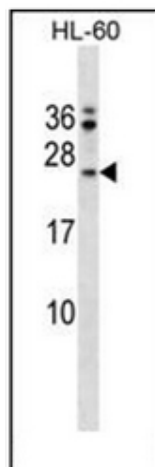
FAIM1 (FAIM) (Center) Rabbit Polyclonal Antibody

Product data:

Product Type:	Primary Antibodies
Applications:	WB
Recommended Dilution:	ELISA: 1/1000. Western Blot: 1/100-1/500.
Reactivity:	Human
Host:	Rabbit
Isotype:	Ig
Clonality:	Polyclonal
Immunogen:	KLH conjugated synthetic peptide between 64-93 amino acids from the Central region of human FAIM.
Specificity:	This antibody recognizes Human FAIM (Center).
Formulation:	PBS containing 0.09% (W/V) Sodium Azide as preservative State: Aff - Purified State: Liquid purified Ig fraction
Concentration:	lot specific
Purification:	Affinity Chromatography on Protein A
Conjugation:	Unconjugated
Storage:	Store undiluted at 2-8°C for one month or (in aliquots) at -20°C for longer. Avoid repeated freezing and thawing.
Stability:	Shelf life: one year from despatch.
Gene Name:	Fas apoptotic inhibitory molecule
Database Link:	Entrez Gene 55179 Human Q9NVQ4
Background:	FAIM plays a role as an inducible effector molecule that mediates Fas resistance produced by surface Ig engagement in B cells (By similarity).
Synonyms:	FAIM1, FAIM-1
Note:	Molecular Weight: 20215 Da



[View online »](#)

Product images:

Western blot analysis of FAIM Antibody (Center) in HL-60 cell line lysates (35ug/lane). This demonstrates the FAIM antibody detected the FAIM protein (arrow).