

## Product datasheet for **AP51508PU-N**

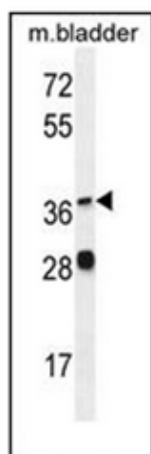
### **FADS6 (C-term) Rabbit Polyclonal Antibody**

#### **Product data:**

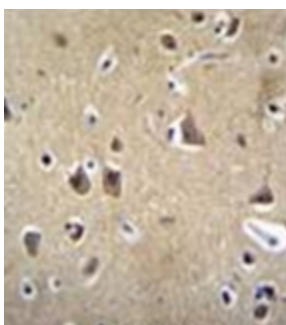
Product Type:	Primary Antibodies
Applications:	IHC, WB
Recommended Dilution:	<b>ELISA:</b> 1/1000. <b>Western Blot:</b> 1/100-1/500. <b>Immunohistochemistry on Paraffin Sections:</b> 1/50-1/100.
Reactivity:	Human, Mouse
Host:	Rabbit
Isotype:	Ig
Clonality:	Polyclonal
Immunogen:	KLH conjugated synthetic peptide between 310-340 amino acids from the C-terminal region of human FADS6
Specificity:	This antibody recognizes Mouse FADS6 (C-term).
Formulation:	PBS containing 0.09% (W/V) Sodium Azide as preservative State: Aff - Purified State: Liquid purified Ig fraction
Concentration:	lot specific
Purification:	Affinity Chromatography on Protein A
Conjugation:	Unconjugated
Storage:	Store undiluted at 2-8°C for one month or (in aliquots) at -20°C for longer. Avoid repeated freezing and thawing.
Stability:	Shelf life: one year from despatch.
Gene Name:	fatty acid desaturase 6
Database Link:	<a href="#">Entrez Gene 283985 Human Q8N9I5</a>
Synonyms:	Fatty acid desaturase 6
Note:	<b>Molecular Weight:</b> 40447 Da
Protein Families:	Transmembrane



[View online »](#)

**Product images:**

Western blot analysis of FADS6 Antibody (C-term) in mouse bladder tissue lysates (35ug/lane). This demonstrates the FADS6 antibody detected the FADS6 protein (arrow)



Formalin fixed and paraffin embedded human brain tissue reacted with FADS6 Antibody (C-term) followed by peroxidase conjugation of the secondary antibody and DAB staining.