

Product datasheet for **AP51503PU-N**

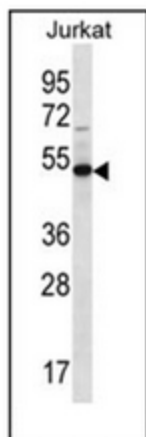
FAM8A1 (N-term) Rabbit Polyclonal Antibody

Product data:

Product Type:	Primary Antibodies
Applications:	WB
Recommended Dilution:	ELISA: 1/1000. Western Blot: 1/100-1/500.
Reactivity:	Human
Host:	Rabbit
Isotype:	Ig
Clonality:	Polyclonal
Immunogen:	KLH conjugated synthetic peptide between 94-133 amino acids from the N-terminal region of Human FA8A1.
Specificity:	This antibody recognizes Human FA8A1 (N-term).
Formulation:	PBS containing 0.09% (W/V) Sodium Azide as preservative State: Aff - Purified State: Liquid purified Ig fraction
Concentration:	lot specific
Purification:	Affinity Chromatography on Protein A
Conjugation:	Unconjugated
Storage:	Store undiluted at 2-8°C for one month or (in aliquots) at -20°C for longer. Avoid repeated freezing and thawing.
Stability:	Shelf life: one year from despatch.
Gene Name:	family with sequence similarity 8 member A1
Database Link:	Entrez Gene 51439 Human Q9UBU6
Synonyms:	Protein FAM8A1,FAM8A1,AHCP
Note:	Molecular Weight: 44123 Da
Protein Families:	Transmembrane



[View online »](#)

Product images:

Western blot analysis of FAM8A1 Antibody (N-term) in Jurkat cell line lysates (35ug/lane). This demonstrates the FAM8A1 antibody detected the FAM8A1 protein (arrow).