

Product datasheet for **AP51502PU-N**

FAM83D (C-term) Rabbit Polyclonal Antibody

Product data:

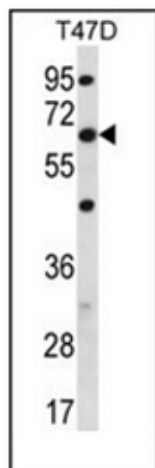
Product Type:	Primary Antibodies
Applications:	WB
Recommended Dilution:	ELISA: 1/1000. Western Blot: 1/100-1/500.
Reactivity:	Human
Host:	Rabbit
Isotype:	Ig
Clonality:	Polyclonal
Immunogen:	KLH conjugated synthetic peptide between 356-385 amino acids from the C-terminal region of human FAM83D
Specificity:	This antibody recognizes Human FAM83D (C-term).
Formulation:	PBS containing 0.09% (W/V) Sodium Azide as preservative State: Aff - Purified State: Liquid purified Ig fraction
Concentration:	lot specific
Purification:	Affinity Chromatography on Protein A
Conjugation:	Unconjugated
Storage:	Store undiluted at 2-8°C for one month or (in aliquots) at -20°C for longer. Avoid repeated freezing and thawing.
Stability:	Shelf life: one year from despatch.
Gene Name:	family with sequence similarity 83 member D
Database Link:	Entrez Gene 81610 Human Q9H4H8
Background:	FA83D is required for proper chromosome congression and alignment during mitosis. Required for targeting KIF22/KID to the spindle microtubules.
Synonyms:	C20orf129, Spindle protein CHICA
Note:	Molecular Weight: 64424 Da



[View online »](#)

Protein Families: Druggable Genome

Product images:



Western blot analysis of FAM83D Antibody (C-term) in T47D cell line lysates (35ug/lane). This demonstrates the FAM83D antibody detected the FAM83D protein (arrow).