

## Product datasheet for **AP51498PU-N**

### **FAM13B1 (FAM13B) (Center) Rabbit Polyclonal Antibody**

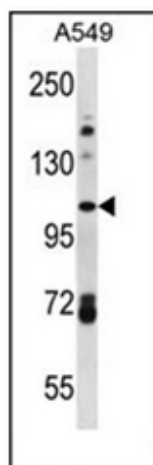
#### Product data:

|                       |                                                                                                                        |
|-----------------------|------------------------------------------------------------------------------------------------------------------------|
| Product Type:         | Primary Antibodies                                                                                                     |
| Applications:         | WB                                                                                                                     |
| Recommended Dilution: | <b>ELISA:</b> 1/1000.<br><b>Western Blot:</b> 1/100-1/500.                                                             |
| Reactivity:           | Human                                                                                                                  |
| Host:                 | Rabbit                                                                                                                 |
| Isotype:              | Ig                                                                                                                     |
| Clonality:            | Polyclonal                                                                                                             |
| Immunogen:            | KLH conjugated synthetic peptide between 565-594 amino acids from the Central region of Human FAM13B                   |
| Specificity:          | This antibody recognizes Human FAM13B (Center).                                                                        |
| Formulation:          | PBS containing 0.09% (W/V) Sodium Azide as preservative<br>State: Aff - Purified<br>State: Liquid purified Ig fraction |
| Concentration:        | lot specific                                                                                                           |
| Purification:         | Affinity Chromatography on Protein A                                                                                   |
| Conjugation:          | Unconjugated                                                                                                           |
| Storage:              | Store undiluted at 2-8°C for one month or (in aliquots) at -20°C for longer.<br>Avoid repeated freezing and thawing.   |
| Stability:            | Shelf life: one year from despatch.                                                                                    |
| Gene Name:            | family with sequence similarity 13 member B                                                                            |
| Database Link:        | <a href="#">Entrez Gene 51306 Human Q9NYF5</a>                                                                         |
| Synonyms:             | C5orf5, FAM13B1, GAP-like protein N61                                                                                  |
| Note:                 | <b>Molecular Weight:</b> 104543 Da                                                                                     |



[View online »](#)

## Product images:



Western blot analysis of FAM13B Antibody (Center) in A549 cell line lysates (35ug/lane). This demonstrates the FAM13B antibody detected the FAM13B protein (arrow).