

## Product datasheet for **AP51497PU-N**

### **F8A2 (N-term) Rabbit Polyclonal Antibody**

#### **Product data:**

Product Type:	Primary Antibodies
Applications:	WB
Recommended Dilution:	<b>ELISA:</b> >1/1000 (Peptide Elisa only) <b>Western Blot:</b> 1/500-1/1,000.
Reactivity:	Human
Host:	Rabbit
Isotype:	Ig
Clonality:	Polyclonal
Immunogen:	KLH conjugated synthetic peptide between 12-40 amino acids from the N-terminal region of Human F8A2
Specificity:	This antibody recognizes Human F8A2 (N-term).
Formulation:	PBS containing 0.09% (W/V) Sodium Azide as preservative State: Aff - Purified State: Liquid purified Ig fraction
Concentration:	lot specific
Purification:	Affinity Chromatography on Protein A
Conjugation:	Unconjugated
Storage:	Store undiluted at 2-8°C for one month or (in aliquots) at -20°C for longer. Avoid repeated freezing and thawing.
Stability:	Shelf life: one year from despatch.
Gene Name:	coagulation factor VIII-associated 2
Database Link:	<a href="#">Entrez Gene 474383 Human P23610</a>
Background:	This gene is part of a region that is repeated three times on chromosome X, once in intron 22 of the F8 gene and twice closer to the Xq telomere. This record represents the middle copy. Although its function is unknown, the observation that this gene is conserved in the mouse implies it has some function. Unlike factor VIII, this gene is transcribed abundantly in a wide variety of cell types.

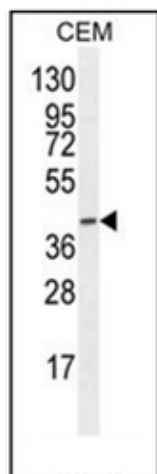


[View online »](#)

Synonyms: Factor VIII intron 22 protein, F8A1, F8A

Note: **Molecular Weight:** 39103 Da

**Product images:**



Western blot analysis of F8A2 Antibody (N-term) in CEM cell line lysates (35ug/lane). This demonstrates the F8A2 antibody detected the F8A2 protein (arrow).