

Product datasheet for **AP51496PU-N**

Proteinase Activated Receptor 3 (F2RL2) (N-term) Rabbit Polyclonal Antibody

Product data:

Product Type:	Primary Antibodies
Applications:	IHC, WB
Recommended Dilution:	ELISA: 1/1000. Western Blot: 1/100-1/500. Immunohistochemistry on Paraffin Sections: 1/10-1/50.
Reactivity:	Human
Host:	Rabbit
Isotype:	Ig
Clonality:	Polyclonal
Immunogen:	KLH conjugated synthetic peptide between 20-50 amino acids from the N-terminal region of human F2RL2
Specificity:	This antibody recognizes Human F2RL2 (N-term).
Formulation:	PBS containing 0.09% (W/V) Sodium Azide as preservative State: Aff - Purified State: Liquid purified Ig fraction
Concentration:	lot specific
Purification:	Affinity Chromatography on Protein A
Conjugation:	Unconjugated
Storage:	Store undiluted at 2-8°C for one month or (in aliquots) at -20°C for longer. Avoid repeated freezing and thawing.
Stability:	Shelf life: one year from despatch.
Gene Name:	coagulation factor II thrombin receptor like 2
Database Link:	Entrez Gene 2151 Human O00254



[View online »](#)

Background:

Coagulation factor II (thrombin) receptor-like 2 (F2RL2) is a member of the large family of 7-transmembrane-region receptors that couple to guanosine-nucleotide-binding proteins. F2RL2 is also a member of the protease-activated receptor family and activated by thrombin. F2RL2 is activated by proteolytic cleavage of its extracellular amino terminus. The new amino terminus functions as a tethered ligand and activates the receptor. F2RL2 is a cofactor for F2RL3 activation by thrombin. It mediates thrombin-triggered phosphoinositide hydrolysis and is expressed in a variety of tissues.

Synonyms:

PAR3, PAR-3, Thrombin receptor-like 2

Note:

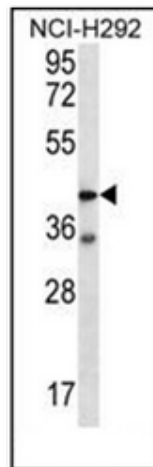
Molecular Weight: 42508 Da

Protein Families:

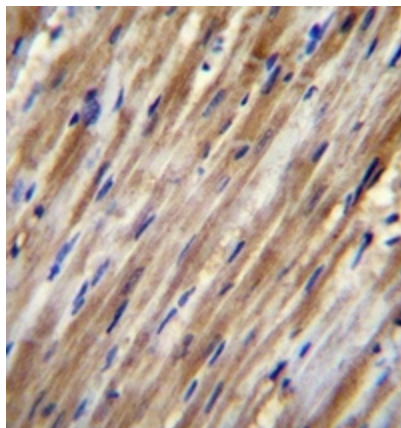
Druggable Genome, GPCR, Transmembrane

Protein Pathways:

Neuroactive ligand-receptor interaction

Product images:

Western blot analysis of F2RL2 Antibody (N-term) in NCI-H292 cell line lysates (35ug/lane). This demonstrates the F2RL2 antibody detected the F2RL2 protein (arrow).



Formalin fixed and paraffin embedded human heart tissue reacted with F2RL2 Antibody (N-term) followed by peroxidase conjugation of the secondary antibody and DAB staining.