

## Product datasheet for **AP51495PU-N**

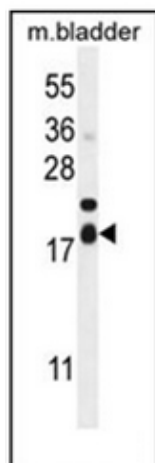
### **FAM162A (C-term) Rabbit Polyclonal Antibody**

#### **Product data:**

Product Type:	Primary Antibodies
Applications:	WB
Recommended Dilution:	<b>ELISA:</b> 1/1000. <b>Western Blot:</b> 1/100-1/500.
Reactivity:	Human, Mouse
Host:	Rabbit
Isotype:	Ig
Clonality:	Polyclonal
Immunogen:	KLH conjugated synthetic peptide between 118-146 amino acids from the C-terminal region of Human FAM162A
Specificity:	This antibody recognizes Human and Mouse FAM162A (C-term).
Formulation:	PBS containing 0.09% (W/V) Sodium Azide as preservative State: Aff - Purified State: Liquid purified Ig fraction
Concentration:	lot specific
Purification:	Affinity Chromatography on Protein A
Conjugation:	Unconjugated
Storage:	Store undiluted at 2-8°C for one month or (in aliquots) at -20°C for longer. Avoid repeated freezing and thawing.
Stability:	Shelf life: one year from despatch.
Gene Name:	family with sequence similarity 162 member A
Database Link:	<a href="#">Entrez Gene 26355 Human Q96A26</a>
Synonyms:	C3orf28, E2IG5, DC16, FWP001
Note:	<b>Molecular Weight:</b> 17342 Da
Protein Families:	Transmembrane



[View online »](#)

**Product images:**

Western blot analysis of FAM162A Antibody (C-term) in mouse bladder tissue lysates (35ug/lane). This demonstrates the F162A antibody detected the F162A protein (arrow).