

Product datasheet for **AP51491PU-N**

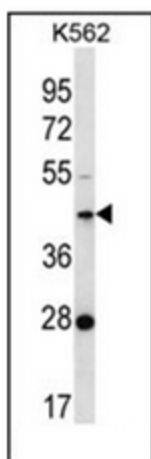
OTULINL (Center) Rabbit Polyclonal Antibody

Product data:

Product Type:	Primary Antibodies
Applications:	WB
Recommended Dilution:	ELISA: 1/1000. Western Blot: 1/100-1/500.
Reactivity:	Human
Host:	Rabbit
Isotype:	Ig
Clonality:	Polyclonal
Immunogen:	KLH conjugated synthetic peptide between 195-224 amino acids from the Central region of human FAM105A
Specificity:	This antibody recognizes Human FAM105A (Center).
Formulation:	PBS containing 0.09% (W/V) Sodium Azide as preservative State: Aff - Purified State: Liquid purified Ig fraction
Concentration:	lot specific
Purification:	Affinity Chromatography on Protein A
Conjugation:	Unconjugated
Storage:	Store undiluted at 2-8°C for one month or (in aliquots) at -20°C for longer. Avoid repeated freezing and thawing.
Stability:	Shelf life: one year from despatch.
Gene Name:	family with sequence similarity 105 member A
Database Link:	Entrez Gene 54491 Human Q9NUU6
Synonyms:	FLJ11127; FLJ43660; NET20
Note:	Molecular Weight: 42196 Da
Protein Families:	Transmembrane



[View online »](#)

Product images:

Western blot analysis of FAM105A Antibody in K562 cell line lysates (35ug/lane). This demonstrates the F105A antibody detected the F105A protein (arrow).