

Product datasheet for **AP51487PU-N**

EXTL3 (N-term) Rabbit Polyclonal Antibody

Product data:

Product Type:	Primary Antibodies
Applications:	FC, IHC, WB
Recommended Dilution:	ELISA: 1/1000. Western Blot: 1/100-1/500. Flow Cytometry: 1/10-1/50. Immunohistochemistry on Paraffin Sections: 1/50-1/100.
Reactivity:	Human
Host:	Rabbit
Isotype:	Ig
Clonality:	Polyclonal
Immunogen:	KLH conjugated synthetic peptide between 50~80 amino acids from the N-terminal region of human EXTL3
Specificity:	This antibody recognizes Human EXTL3 (N-term).
Formulation:	PBS containing 0.09% (W/V) Sodium Azide as preservative State: Aff - Purified State: Liquid purified Ig fraction
Concentration:	lot specific
Purification:	Affinity Chromatography on Protein A
Conjugation:	Unconjugated
Storage:	Store undiluted at 2-8°C for one month or (in aliquots) at -20°C for longer. Avoid repeated freezing and thawing.
Stability:	Shelf life: one year from despatch.
Gene Name:	Homo sapiens exostosin-like glycosyltransferase 3 (EXTL3), transcript variant 1
Database Link:	Entrez Gene 2137 Human O43909
Background:	EXTL3 is probable glycosyltransferase (By similarity).
Synonyms:	EXT-related protein 1, EXTL1L, EXTR1, KIAA0519



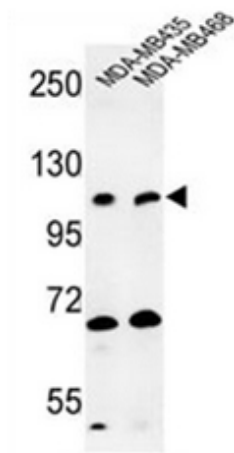
[View online »](#)

Note: **Molecular Weight:** 104749 Da

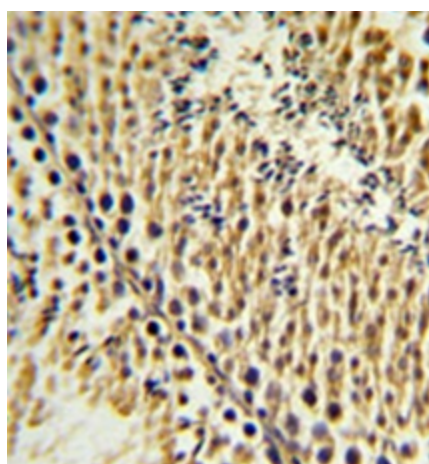
Protein Families: Transmembrane

Protein Pathways: Heparan sulfate biosynthesis, Metabolic pathways

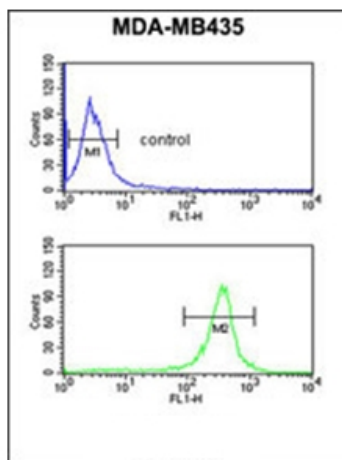
Product images:



Western blot analysis of EXTL3 Antibody (N-term) in MDA-MB435, MDA-MB468 cell line lysates (35ug/lane). EXTL3 (arrow) was detected using the purified Pab.



Formalin fixed and paraffin embedded testis tissue reacted with EXTL3 Antibody (N-term) followed by peroxidase conjugation of the secondary antibody and DAB staining.



Flow cytometric analysis of MDA-MB435 cells using EXTL3 Antibody (N-term) (bottom histogram) compared to a negative control cell (top histogram). FITC-conjugated goat-anti-rabbit secondary antibodies were used for the analysis.