

Product datasheet for **AP51485PU-N**

EXTL2 (C-term) Rabbit Polyclonal Antibody

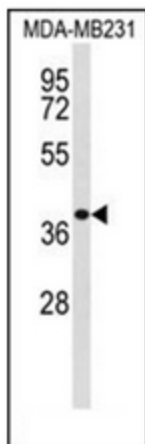
Product data:

Product Type:	Primary Antibodies
Applications:	WB
Recommended Dilution:	ELISA: 1/1000. Western Blot: 1/100-1/500.
Reactivity:	Human, Mouse
Host:	Rabbit
Isotype:	Ig
Clonality:	Polyclonal
Immunogen:	KLH conjugated synthetic peptide between 280~310 amino acids from the C-terminal region of human EXTL2.
Specificity:	This antibody recognizes Human and Mouse EXTL2 (C-term).
Formulation:	PBS containing 0.09% (W/V) Sodium Azide as preservative State: Aff - Purified State: Liquid purified Ig fraction
Concentration:	lot specific
Purification:	Affinity Chromatography on Protein A
Conjugation:	Unconjugated
Storage:	Store undiluted at 2-8°C for one month or (in aliquots) at -20°C for longer. Avoid repeated freezing and thawing.
Stability:	Shelf life: one year from despatch.
Gene Name:	exostosin-like glycosyltransferase 2
Database Link:	Entrez Gene 2135 Human Q9UBQ6
Background:	EXTL2 is a glycosyltransferase required for the biosynthesis of heparan-sulfate and responsible for the alternating addition of beta-1-4-linked glucuronic acid (GlcA) and alpha-1-4-linked N-acetylglucosamine (GlcNAc) units to nascent heparan sulfate chains.
Synonyms:	Alpha-GalNAcT EXTL2, EXT-related protein 2, EXTR2

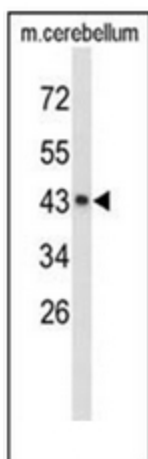


[View online »](#)

Note: **Molecular Weight:** 37466 Da
Protein Families: Transmembrane
Protein Pathways: Heparan sulfate biosynthesis

Product images:

Western blot analysis of EXTL2 Antibody (C-term) in MDA-MB231 cell line lysates (35ug/lane). EXTL2 (arrow) was detected using the purified Pab;



Western blot analysis of EXTL2 Antibody (C-term) in mouse cerebellum tissue lysates (35ug/lane). EXTL2 (arrow) was detected using the purified Pab.