

Product datasheet for **AP51483PU-N**

EXT1 (Center) Rabbit Polyclonal Antibody

Product data:

Product Type:	Primary Antibodies
Applications:	WB
Recommended Dilution:	ELISA: 1/1000. Western Blot: 1/100-1/500.
Reactivity:	Human
Host:	Rabbit
Isotype:	Ig
Clonality:	Polyclonal
Immunogen:	KLH conjugated synthetic peptide between 297-326 amino acids from the Central region of Human EXT1
Specificity:	This antibody recognizes Human EXT1 (Center).
Formulation:	PBS containing 0.09% (W/V) Sodium Azide as preservative State: Aff - Purified State: Liquid purified Ig fraction
Concentration:	lot specific
Purification:	Affinity Chromatography on Protein A
Conjugation:	Unconjugated
Storage:	Store undiluted at 2-8°C for one month or (in aliquots) at -20°C for longer. Avoid repeated freezing and thawing.
Stability:	Shelf life: one year from despatch.
Gene Name:	exostosin glycosyltransferase 1
Database Link:	Entrez Gene 2131 Human Q16394
Background:	This gene encodes an endoplasmic reticulum-resident type II transmembrane glycosyltransferase involved in the chain elongation step of heparan sulfate biosynthesis. Mutations in this gene cause the type I form of multiple exostoses. [provided by RefSeq].
Synonyms:	EXT1, Multiple exostoses protein 1



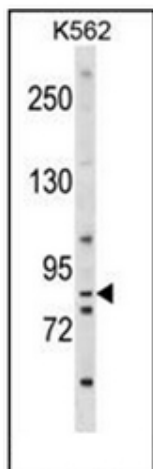
[View online »](#)

Note: **Molecular Weight:** 86255 Da

Protein Families: Druggable Genome, Transmembrane

Protein Pathways: Heparan sulfate biosynthesis, Metabolic pathways

Product images:



Western blot analysis of EXT1 Antibody (Center) in K562 cell line lysates (35ug/lane). This demonstrates the EXT1 antibody detected the EXT1 protein (arrow).