

Product datasheet for **AP51481PU-N**

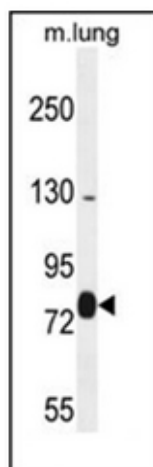
EXOC8 (Center) Rabbit Polyclonal Antibody

Product data:

Product Type:	Primary Antibodies
Applications:	WB
Recommended Dilution:	ELISA: 1/1000. Western Blot: 1/100-1/500.
Reactivity:	Human, Mouse
Host:	Rabbit
Isotype:	Ig
Clonality:	Polyclonal
Immunogen:	KLH conjugated synthetic peptide between 367-397 amino acids from the Central region of Human EXOC8
Specificity:	This antibody recognizes Human and Mouse EXOC8 (Center).
Formulation:	PBS containing 0.09% (W/V) Sodium Azide as preservative State: Aff - Purified State: Liquid purified Ig fraction
Concentration:	lot specific
Purification:	Affinity Chromatography on Protein A
Conjugation:	Unconjugated
Storage:	Store undiluted at 2-8°C for one month or (in aliquots) at -20°C for longer. Avoid repeated freezing and thawing.
Stability:	Shelf life: one year from despatch.
Gene Name:	exocyst complex component 8
Database Link:	Entrez Gene 102058 Mouse Entrez Gene 149371 Human Q8IYI6
Synonyms:	Exocyst complex component 8, Exocyst complex 84 kDa subunit
Note:	Molecular Weight: 81799 Da



[View online »](#)

Product images:

Western blot analysis of EXOC8 Antibody (Center) in mouse lung tissue lysates (35ug/lane). This demonstrates the EXOC8 antibody detected the EXOC8 protein (arrow).