

## Product datasheet for **AP51477PU-N**

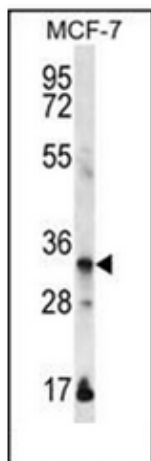
### EVPLL (Center) Rabbit Polyclonal Antibody

#### Product data:

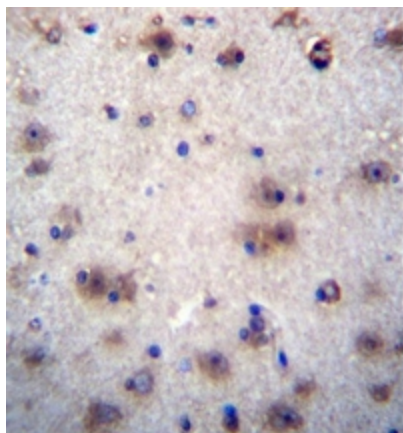
Product Type:	Primary Antibodies
Applications:	IHC, WB
Recommended Dilution:	<b>ELISA:</b> 1/1000. <b>Western Blot:</b> 1/100-1/500. <b>Immunohistochemistry on Paraffin Sections:</b> 1/10-1/50.
Reactivity:	Human
Host:	Rabbit
Isotype:	Ig
Clonality:	Polyclonal
Immunogen:	KLH conjugated synthetic peptide between 117-146 amino acids from the Central region of human EVPLL
Specificity:	This antibody recognizes Human EVPLL (Center).
Formulation:	PBS containing 0.09% (W/V) Sodium Azide as preservative State: Aff - Purified State: Liquid purified Ig fraction
Concentration:	lot specific
Purification:	Affinity Chromatography on Protein A
Conjugation:	Unconjugated
Storage:	Store undiluted at 2-8°C for one month or (in aliquots) at -20°C for longer. Avoid repeated freezing and thawing.
Stability:	Shelf life: one year from despatch.
Gene Name:	envoplakin-like
Database Link:	<a href="#">Entrez Gene 645027 Human A8MZ36</a>
Synonyms:	Envoplakin-like protein
Note:	<b>Molecular Weight:</b> 33953 Da



[View online »](#)

**Product images:**

Western blot analysis of EVPLL Antibody (Center) in MCF-7 cell line lysates (35ug/lane). This demonstrates the EVPLL antibody detected the EVPLL protein (arrow).



Formalin fixed and paraffin embedded human brain tissue reacted with EVPLL Antibody (Center) followed by peroxidase conjugation of the secondary antibody and DAB staining.