

## Product datasheet for **AP51476PU-N**

### **EVI5 (Center) Rabbit Polyclonal Antibody**

#### **Product data:**

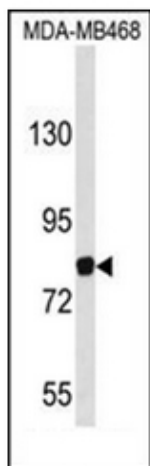
Product Type:	Primary Antibodies
Applications:	WB
Recommended Dilution:	<b>ELISA:</b> 1/1000. <b>Western Blot:</b> 1/100-1/500.
Reactivity:	Human, Mouse
Host:	Rabbit
Isotype:	Ig
Clonality:	Polyclonal
Immunogen:	KLH conjugated synthetic peptide between 230~259 amino acids from the Center region of human EVI5
Specificity:	This antibody recognizes Human and Mouse EVI5 (Center).
Formulation:	PBS containing 0.09% (W/V) Sodium Azide as preservative State: Aff - Purified State: Liquid purified Ig fraction
Concentration:	lot specific
Purification:	Affinity Chromatography on Protein A
Conjugation:	Unconjugated
Storage:	Store undiluted at 2-8°C for one month or (in aliquots) at -20°C for longer. Avoid repeated freezing and thawing.
Stability:	Shelf life: one year from despatch.
Gene Name:	ecotropic viral integration site 5
Database Link:	<a href="#">Entrez Gene 7813 Human O60447</a>
Background:	EVI5 is a novel centrosomal protein with a complex expression pattern and subcellular localization, possibly involved in centrosome stability and dynamics. It may act as an oncogene.
Synonyms:	NB4S, EVI-5



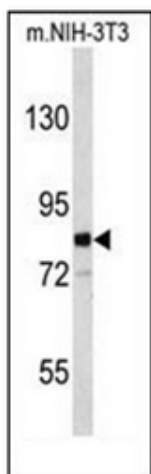
[View online »](#)

Note: **Molecular Weight:** 92935 Da

## Product images:



Western blot analysis of EVI5 Antibody (Center) in MDA-MB468 cell line lysates (35ug/lane). EVI5 (arrow) was detected using the purified Pab.



Western blot analysis of EVI5 Antibody (Center) in mouse NIH-3T3 cell line lysates (35ug/lane). EVI5 (arrow) was detected using the purified Pab.