

## Product datasheet for **AP51475PU-N**

### **EVI1 (MECOM) (N-term) Rabbit Polyclonal Antibody**

#### **Product data:**

Product Type:	Primary Antibodies
Applications:	WB
Recommended Dilution:	<b>ELISA:</b> 1/1000. <b>Western Blot:</b> 1/100-1/500.
Reactivity:	Human
Host:	Rabbit
Isotype:	Ig
Clonality:	Polyclonal
Immunogen:	KLH conjugated synthetic peptide between 1-30 amino acids from the N-terminal region of Human EVI1.
Specificity:	This antibody recognizes Human EVI1 (N-term).
Formulation:	PBS containing 0.09% (W/V) Sodium Azide as preservative State: Aff - Purified State: Liquid purified Ig fraction
Concentration:	lot specific
Purification:	Affinity Chromatography on Protein A
Conjugation:	Unconjugated
Storage:	Store undiluted at 2-8°C for one month or (in aliquots) at -20°C for longer. Avoid repeated freezing and thawing.
Stability:	Shelf life: one year from despatch.
Gene Name:	MDS1 and EVI1 complex locus
Database Link:	<a href="#">Entrez Gene 2122 Human Q03112</a>
Background:	EVI1 functions as a transcriptional regulator binding to DNA sequences in the promoter region of target genes and regulating positively or negatively their expression. Oncogene which plays a role in development, cell proliferation and differentiation. May also play a role in apoptosis through regulation of the JNK and TGF-beta signaling. Involved in hematopoiesis.
Synonyms:	EVI-1, MECOM



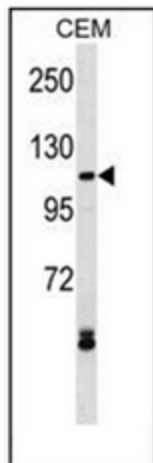
[View online »](#)

**Note:** **Molecular Weight:** 118276 Da

**Protein Families:** Druggable Genome, Transcription Factors

**Protein Pathways:** Chronic myeloid leukemia, MAPK signaling pathway, Pathways in cancer

**Product images:**



Western blot analysis of EV11 Antibody (N-term) in CEM cell line lysates (35ug/lane). This demonstrates the EV11 antibody detected the EV11 protein (arrow).