

Product datasheet for **AP51472PU-N**

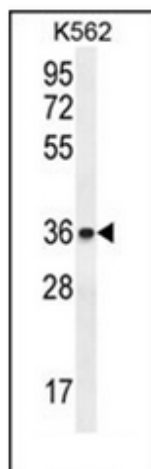
ETV2 / ER71 (N-term) Rabbit Polyclonal Antibody

Product data:

Product Type:	Primary Antibodies
Applications:	WB
Recommended Dilution:	ELISA: 1/1000. Western Blot: 1/100-1/500.
Reactivity:	Human
Host:	Rabbit
Isotype:	Ig
Clonality:	Polyclonal
Immunogen:	KLH conjugated synthetic peptide between 68-97 amino acids from the N-terminal region of human ETV2.
Specificity:	This antibody recognizes Human ETV2 / ER71 (N-term).
Formulation:	PBS containing 0.09% (W/V) Sodium Azide as preservative State: Aff - Purified State: Liquid purified Ig fraction
Concentration:	lot specific
Purification:	Affinity Chromatography on Protein A
Conjugation:	Unconjugated
Storage:	Store undiluted at 2-8°C for one month or (in aliquots) at -20°C for longer. Avoid repeated freezing and thawing.
Stability:	Shelf life: one year from despatch.
Gene Name:	ETS variant 2
Database Link:	Entrez Gene 2116 Human O00321
Background:	Binds to DNA sequences containing the consensus pentanucleotide 5'-CGGA[AT]-3' (By similarity).
Synonyms:	ETSRP71, Ets-related protein 71
Note:	Molecular Weight: 36504 Da



[View online »](#)

Product images:

Western blot analysis of ETV2 / ER71 Antibody (N-term) Cat.-No AP51472PU-N in K562 cell line lysates (35ug/lane). This demonstrates the ETV2 antibody detected the ETV2 protein (arrow).