

## Product datasheet for **AP51471PU-N**

### ETS2 (Center) Rabbit Polyclonal Antibody

#### Product data:

Product Type:	Primary Antibodies
Applications:	FC, IHC, WB
Recommended Dilution:	<b>ELISA:</b> 1/1000. <b>Western Blot:</b> 1/100-1/500. <b>Flow Cytometry:</b> 1/10-1/50. <b>Immunohistochemistry on Paraffin Sections:</b> 1/50-1/100.
Reactivity:	Human
Host:	Rabbit
Isotype:	Ig
Clonality:	Polyclonal
Immunogen:	KLH conjugated synthetic peptide between 152~182 amino acids from the Central region of Human ETS2.
Specificity:	This antibody recognizes Human ETS2 (Center).
Formulation:	PBS containing 0.09% (W/V) Sodium Azide as preservative State: Aff - Purified State: Liquid purified Ig fraction
Concentration:	lot specific
Purification:	Protein A column, followed by peptide affinity purification
Conjugation:	Unconjugated
Storage:	Store undiluted at 2-8°C for one month or (in aliquots) at -20°C for longer. Avoid repeated freezing and thawing.
Stability:	Shelf life: one year from despatch.
Gene Name:	ETS proto-oncogene 2, transcription factor
Database Link:	<a href="#">Entrez Gene 2114 Human P15036</a>



[View online »](#)

**Background:** ETS transcriptions factors, such as ETS2, regulate numerous genes and are involved in stem cell development, cell senescence and death, and tumorigenesis. The conserved ETS domain within these proteins is a winged helix-turn-helix DNA-binding domain that recognizes the core consensus DNA sequence GGAA/T of target genes.

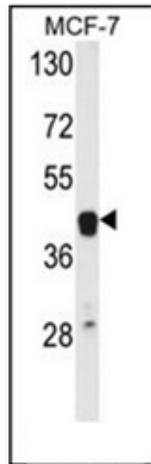
**Synonyms:** Protein C-ets-2

**Note:** **Molecular Weight:** 53001 Da

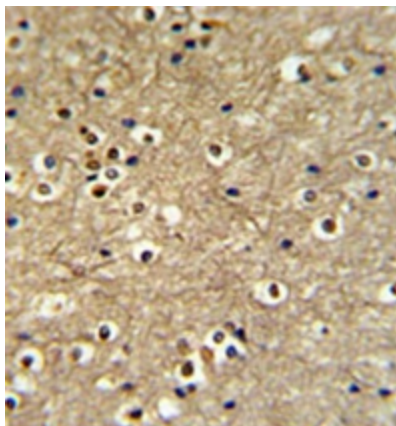
**Protein Families:** Druggable Genome, Transcription Factors

**Protein Pathways:** Dorso-ventral axis formation

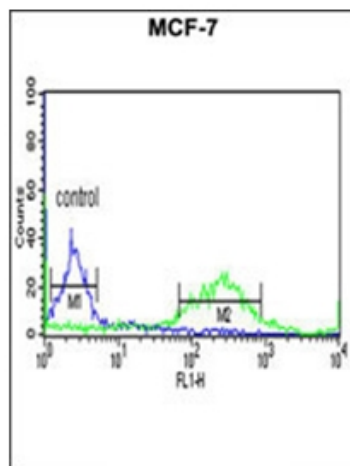
**Product images:**



Western blot analysis of ETS2 Antibody (Center) in MCF-7 cell line lysates (35ug/lane). ETS2 (arrow) was detected using the purified Pab.



Formalin fixed and paraffin embedded brain tissue reacted with ETS2 Antibody (Center) followed by peroxidase conjugation of the secondary antibody and DAB staining.



Flow cytometric analysis of MCF-7 cells using ETS2 Antibody (Center) (right histogram) compared to a negative control cell (left histogram). FITC-conjugated goat-anti-rabbit secondary antibodies were used for the analysis.