

Product datasheet for **AP51470PU-N**

ETS1 (N-term) Rabbit Polyclonal Antibody

Product data:

Product Type:	Primary Antibodies
Applications:	FC, IF, WB
Recommended Dilution:	ELISA: 1/1000. Western Blot: 1/100-1/500. Flow Cytometry: 1/10-1/50. Immunofluorescence: 1/10-1/50.
Reactivity:	Human
Host:	Rabbit
Isotype:	Ig
Clonality:	Polyclonal
Immunogen:	KLH conjugated synthetic peptide between 46-74 amino acids from the N-terminal region of Human ETS1
Specificity:	This antibody recognizes Human ETS1 (N-term).
Formulation:	PBS containing 0.09% (W/V) Sodium Azide as preservative State: Aff - Purified State: Liquid purified Ig fraction
Concentration:	lot specific
Purification:	Affinity Chromatography on Protein A
Conjugation:	Unconjugated
Storage:	Store undiluted at 2-8°C for one month or (in aliquots) at -20°C for longer. Avoid repeated freezing and thawing.
Stability:	Shelf life: one year from despatch.
Gene Name:	ETS proto-oncogene 1, transcription factor
Database Link:	Entrez Gene 2113 Human P14921



[View online »](#)

Background: ETS transcriptions factors, such as ETS1, regulate numerous genes and are involved in stem cell development, cell senescence and death, and tumorigenesis. The conserved ETS domain within these proteins is a winged helix-turn-helix DNA-binding domain that recognizes the core consensus DNA sequence GGAA/T of target genes (summary by Dwyer et al., 2007 [PubMed 17986575]).

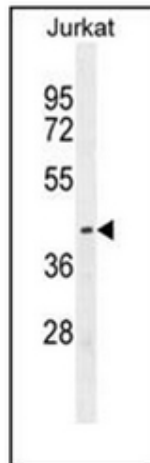
Synonyms: Protein C-ets-1, EWSR2, p54

Note: **Molecular Weight:** 50408 Da

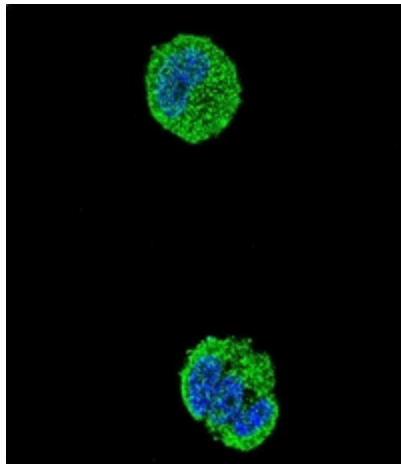
Protein Families: Druggable Genome, Transcription Factors

Protein Pathways: Dorso-ventral axis formation, Pathways in cancer, Renal cell carcinoma

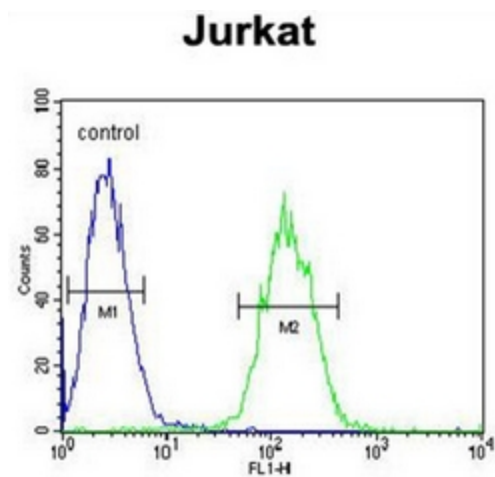
Product images:



Western blot analysis of ETS1 Antibody (N-term) in Jurkat cell line lysates (35ug/lane). This demonstrates the ETS1 antibody detected the ETS1 protein (arrow).



Confocal immunofluorescent analysis of ETS1 Antibody (N-term) with MCF-7 cell followed by Alexa Fluor[®]488-conjugated goat anti-rabbit IgG (green). DAPI was used to stain the cell nuclear (blue).



Flow cytometric analysis of Jurkat cells using ETS1 Antibody (N-term) (right histogram) compared to a negative control cell (left histogram). FITC-conjugated goat-anti-rabbit secondary antibodies were used for the analysis.