

Product datasheet for **AP51469PU-N**

ETNK2 (N-term) Rabbit Polyclonal Antibody

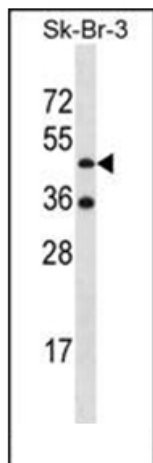
Product data:

Product Type:	Primary Antibodies
Applications:	WB
Recommended Dilution:	ELISA: 1/1000. Western Blot: 1/100-1/500.
Reactivity:	Human
Host:	Rabbit
Isotype:	Ig
Clonality:	Polyclonal
Immunogen:	KLH conjugated synthetic peptide between 58-87 amino acids from the N-terminal region of Human ETNK2
Specificity:	This antibody recognizes Human ETNK2 (N-term).
Formulation:	PBS containing 0.09% (W/V) Sodium Azide as preservative State: Aff - Purified State: Liquid purified Ig fraction
Concentration:	lot specific
Purification:	Affinity Chromatography on Protein A
Conjugation:	Unconjugated
Storage:	Store undiluted at 2-8°C for one month or (in aliquots) at -20°C for longer. Avoid repeated freezing and thawing.
Stability:	Shelf life: one year from despatch.
Gene Name:	ethanolamine kinase 2
Database Link:	Entrez Gene 55224 Human Q9NVF9
Background:	The protein encoded by this gene is a member of choline/ethanolamine kinase family which catalyzes the first step of phosphatidylethanolamine (PtdEtn) biosynthesis via the cytidine diphosphate (CDP) ethanolamine pathway.
Synonyms:	ETNK2, EK12

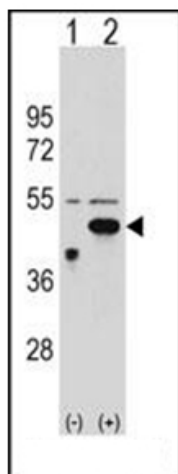


[View online »](#)

Note: **Molecular Weight:** 44781 Da
Protein Families: Druggable Genome
Protein Pathways: Glycerophospholipid metabolism, Metabolic pathways

Product images:

Western blot analysis of ETNK2 Antibody (N-term) in SK-BR-3 cell line lysates (35ug/lane). This demonstrates the ETNK2 antibody detected the ETNK2 protein (arrow).



Western blot analysis of ETNK2 (arrow) using ETNK2 Antibody (N-term). 293 cell lysates (2 ug/lane) either nontransfected (Lane 1) or transiently transfected (Lane 2) with the ETNK2 gene.