

Product datasheet for **AP51468PU-N**

ETFA (C-term) Rabbit Polyclonal Antibody

Product data:

Product Type:	Primary Antibodies
Applications:	FC, IHC, WB
Recommended Dilution:	ELISA: 1/1000. Western Blot: 1/100-1/500. Flow Cytometry: 1/10-1/50. Immunohistochemistry on Paraffin Sections: 1/50-1/100.
Reactivity:	Human, Mouse
Host:	Rabbit
Isotype:	Ig
Clonality:	Polyclonal
Immunogen:	KLH conjugated synthetic peptide between 283-311 amino acids from the C-terminal region of human ETFA
Specificity:	This antibody recognizes Human and Mouse ETFA (C-term).
Formulation:	PBS containing 0.09% (W/V) Sodium Azide as preservative State: Aff - Purified State: Liquid purified Ig fraction
Concentration:	lot specific
Purification:	Affinity Chromatography on Protein A
Conjugation:	Unconjugated
Storage:	Store undiluted at 2-8°C for one month or (in aliquots) at -20°C for longer. Avoid repeated freezing and thawing.
Stability:	Shelf life: one year from despatch.
Gene Name:	electron transfer flavoprotein alpha subunit
Database Link:	Entrez Gene 110842 Mouse Entrez Gene 2108 Human P13804



[View online »](#)

Background:

ETF A participates in catalyzing the initial step of the mitochondrial fatty acid beta-oxidation. It shuttles electrons between primary flavoprotein dehydrogenases and the membrane-bound electron transfer flavoprotein ubiquinone oxidoreductase. Defects in electron-transfer-flavoprotein have been implicated in type II glutaricaciduria in which multiple acyl-CoA dehydrogenase deficiencies result in large excretion of glutaric, lactic, ethylmalonic, butyric, isobutyric, 2-methyl-butyr ic, and isovaleric acids. Two transcript variants encoding different isoforms have been found for this gene.

Synonyms:

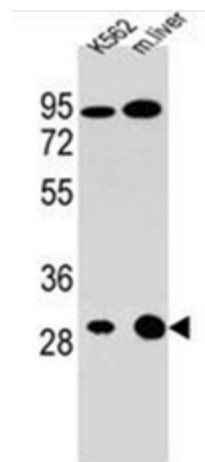
Alpha-ETF

Note:

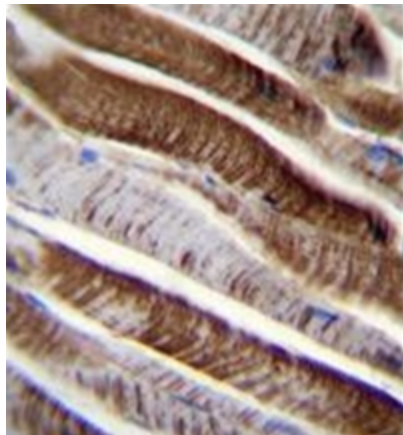
Molecular Weight: 35080 Da

Protein Families:

Druggable Genome

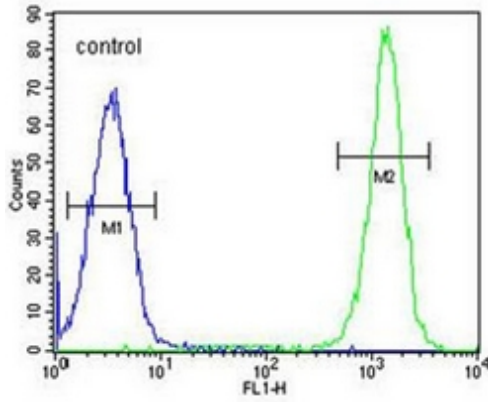
Product images:

Western blot analysis of ETF A Antibody (C-term) in K562 cell line and mouse liver tissue lysates (35ug/lane). This demonstrates the ETF A antibody detected the ETF A protein (arrow).



Formalin fixed and paraffin embedded human skeletal muscle reacted with ETF A Antibody (C-term) followed by peroxidase conjugation of the secondary antibody and DAB staining.

Ramos



Flow cytometric analysis of Ramos cells using ETFA Antibody (C-term) (right histogram) compared to a negative control cell (left histogram). FITC-conjugated goat-anti-rabbit secondary antibodies were used for the analysis.