

Product datasheet for **AP51467PU-N**

FAM62A (ESYT1) (C-term) Rabbit Polyclonal Antibody

Product data:

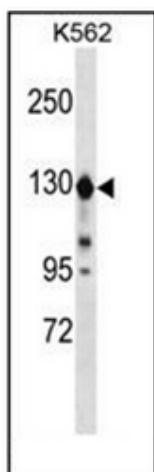
Product Type:	Primary Antibodies
Applications:	WB
Recommended Dilution:	ELISA: 1/1000. Western Blot: 1/100-1/500.
Reactivity:	Human
Host:	Rabbit
Isotype:	Ig
Clonality:	Polyclonal
Immunogen:	KLH conjugated synthetic peptide between 1001-1031 amino acids from the C-terminal region of Human ESYT1
Specificity:	This antibody recognizes Human ESYT1 (C-term).
Formulation:	PBS containing 0.09% (W/V) Sodium Azide as preservative State: Aff - Purified State: Liquid purified Ig fraction
Concentration:	lot specific
Purification:	Affinity Chromatography on Protein A
Conjugation:	Unconjugated
Storage:	Store undiluted at 2-8°C for one month or (in aliquots) at -20°C for longer. Avoid repeated freezing and thawing.
Stability:	Shelf life: one year from despatch.
Gene Name:	extended synaptotagmin protein 1
Database Link:	Entrez Gene 23344 Human Q9BSJ8
Background:	ESYT1 may play a role as calcium-regulated intrinsic membrane protein (By similarity).
Synonyms:	ESYT-1, FAM62A, KIAA0747, MBC2, Extended synaptotagmin-1, E-Syt1, Membrane-bound C2 domain-containing protein
Note:	Molecular Weight: 122856 Da



[View online »](#)

Protein Families: Druggable Genome, Transmembrane

Product images:



Western blot analysis of ESYT1 Antibody (C-term) in K562 cell line lysates (35ug/lane). This demonstrates the ESYT1 antibody detected the ESYT1 protein (arrow).