

Product datasheet for **AP51466PU-N**

ESSPL (PRSS48) (Center) Rabbit Polyclonal Antibody

Product data:

| | |
|-----------------------|---|
| Product Type: | Primary Antibodies |
| Applications: | FC, WB |
| Recommended Dilution: | ELISA: 1/1000. Western Blot: 1/100-1/500. Flow Cytometry: 1/10-1/50. |
| Reactivity: | Human |
| Host: | Rabbit |
| Isotype: | Ig |
| Clonality: | Polyclonal |
| Immunogen: | KLH conjugated synthetic peptide between 104-134 amino acids from the Central region of Human ESSPL. |
| Specificity: | This antibody recognizes Human ESSPL (Center). |
| Formulation: | PBS containing 0.09% (W/V) Sodium Azide as preservative State: Aff - Purified State: Liquid purified Ig fraction |
| Concentration: | lot specific |
| Purification: | Affinity Chromatography on Protein A |
| Conjugation: | Unconjugated |
| Storage: | Store undiluted at 2-8°C for one month or (in aliquots) at -20°C to -80°C for longer. Avoid repeated freezing and thawing. |
| Stability: | Shelf life: one year from despatch. |
| Gene Name: | protease, serine 48 |
| Database Link: | Entrez Gene 345062 Human Q7RTY5 |
| Background: | ESSPL belongs to the peptidase S1 family, however, the specific function is not yet known. There are three different isoforms. |
| Synonyms: | Esspl; Gm1019 |

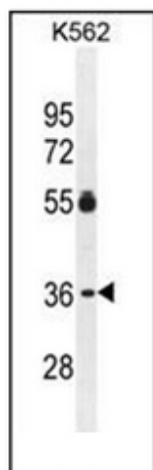


[View online »](#)

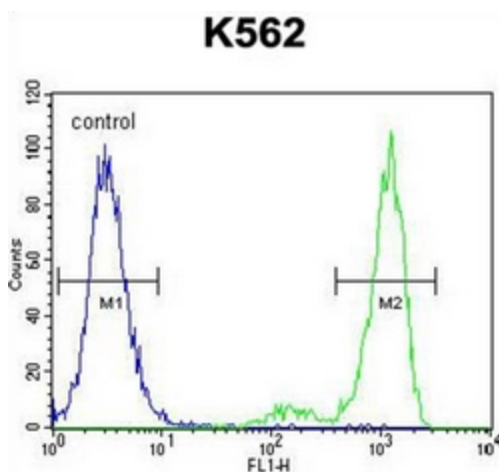
Note: **Molecular Weight:** 35970 Da

Protein Families: Druggable Genome

Product images:



Western blot analysis of ESSPL Antibody in K562 cell line lysates (35ug/lane). This demonstrates the ESSPL antibody detected the ESSPL protein (arrow).



Flow cytometric analysis of K562 cells using ESSPL Antibody (right histogram) compared to a negative control cell (left histogram). FITC-conjugated goat-anti-rabbit secondary antibodies were used for the analysis.