

Product datasheet for **AP51464PU-N**

Estrogen Receptor 1 (ESR1) Rabbit Polyclonal Antibody

Product data:

Product Type:	Primary Antibodies
Applications:	WB
Recommended Dilution:	ELISA: 1/1000. Western Blot: 1/100-1/500.
Reactivity:	Human, Mouse
Host:	Rabbit
Isotype:	Ig
Clonality:	Polyclonal
Immunogen:	Recombinant protein between 53-301 amino acids from Human Estrogen receptor alpha.
Specificity:	This antibody recognizes Human and Mouse Estrogen receptor alpha.
Formulation:	PBS containing 0.09% (W/V) Sodium Azide as preservative State: Aff - Purified State: Liquid purified Ig fraction
Concentration:	lot specific
Purification:	Affinity Chromatography on Protein A
Conjugation:	Unconjugated
Storage:	Store undiluted at 2-8°C for one month or (in aliquots) at -20°C for longer. Avoid repeated freezing and thawing.
Stability:	Shelf life: one year from despatch.
Gene Name:	estrogen receptor 1
Database Link:	Entrez Gene 2099 Human P03372



[View online »](#)

Background:

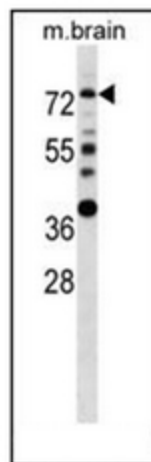
ESR1 is an estrogen receptor, a ligand-activated transcription factor composed of several domains important for hormone binding, DNA binding, and activation of transcription. The protein localizes to the nucleus where it may form a homodimer or a heterodimer with estrogen receptor 2. Estrogen and its receptors are essential for sexual development and reproductive function, but also play a role in other tissues such as bone. Estrogen receptors are also involved in pathological processes including breast cancer, endometrial cancer, and osteoporosis. Alternative splicing results in several transcript variants, which differ in their 5' UTRs and use different promoters.

Synonyms:

ER alpha, Estradiol receptor, ESR1, ESR, NR3A1

Note:

Molecular Weight: 66216 Da

Product images:

Western blot analysis of Estrogen receptor alpha Antibody in mouse brain tissue lysates (35ug/lane). This demonstrates the ESR1 antibody detected the ESR1 protein (arrow).