

Product datasheet for **AP51463PU-N**

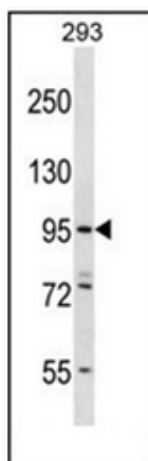
ESP NL (C-term) Rabbit Polyclonal Antibody

Product data:

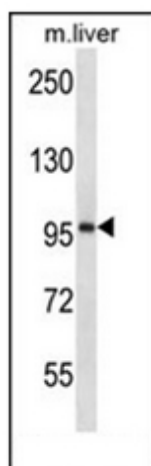
Product Type:	Primary Antibodies
Applications:	WB
Recommended Dilution:	ELISA: 1/1000. Western Blot: 1/100-1/500.
Reactivity:	Human, Mouse
Host:	Rabbit
Isotype:	Ig
Clonality:	Polyclonal
Immunogen:	KLH conjugated synthetic peptide between 910-940 amino acids from the C-terminal region of Human ESPNL.
Specificity:	This antibody recognizes Human and Mouse ESPNL (C-term).
Formulation:	PBS containing 0.09% (W/V) Sodium Azide as preservative State: Aff - Purified State: Liquid purified Ig fraction
Concentration:	lot specific
Purification:	Affinity Chromatography on Protein A
Conjugation:	Unconjugated
Storage:	
Stability:	Shelf life: one year from despatch.
Gene Name:	espin-like
Database Link:	Entrez Gene 339768 Human Q6ZVH7
Synonyms:	ESP NL
Note:	Molecular Weight: 108132 Da



[View online »](#)

Product images:

Western blot analysis of ESPNL Antibody (C-term) in 293 cell line lysates (35ug/lane). This demonstrates the ESPNL antibody detected the ESPNL protein (arrow).



Western blot analysis of ESPNL Antibody (C-term) in mouse liver tissue lysates (35ug/lane). This demonstrates the ESPNL antibody detected the ESPNL protein (arrow).