

Product datasheet for **AP51461PU-N**

EPO (N-term) Rabbit Polyclonal Antibody

Product data:

Product Type:	Primary Antibodies
Applications:	WB
Recommended Dilution:	ELISA: 1/1000. Western Blot: 1/1000.
Reactivity:	Human, Mouse
Host:	Rabbit
Isotype:	Ig
Clonality:	Polyclonal
Immunogen:	KLH conjugated synthetic peptide between 20-48 amino acids from the N-terminal region of Human Erythropoietin.
Specificity:	This antibody recognizes Human and Mouse Erythropoietin / EPO (N-term).
Formulation:	PBS containing 0.09% (W/V) Sodium Azide as preservative State: Aff - Purified State: Liquid purified Ig fraction
Concentration:	lot specific
Purification:	Affinity Chromatography on Protein A
Conjugation:	Unconjugated
Storage:	Store undiluted at 2-8°C for one month or (in aliquots) at -20°C for longer. Avoid repeated freezing and thawing.
Stability:	Shelf life: one year from despatch.
Gene Name:	erythropoietin
Database Link:	Entrez Gene 13856 Mouse Entrez Gene 2056 Human P01588
Background:	EPO is a member of the EPO/TPO family and encodes a secreted, glycosylated cytokine composed of four alpha helical bundles. The protein is found in the plasma and regulates red cell production by promoting erythroid differentiation and initiating hemoglobin synthesis. This protein also has neuroprotective activity against a variety of potential brain injuries and antiapoptotic functions in several tissue types. [provided by RefSeq].



[View online »](#)

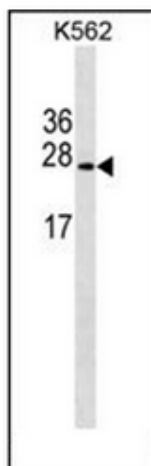
Synonyms: Epoetin

Note: **Molecular Weight:** 21307 Da

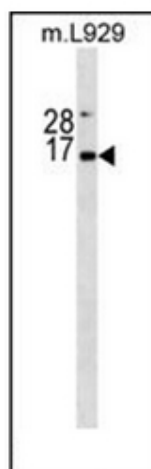
Protein Families: Druggable Genome, ES Cell Differentiation/IPS, Secreted Protein, Transmembrane

Protein Pathways: Cytokine-cytokine receptor interaction, Hematopoietic cell lineage, Jak-STAT signaling pathway

Product images:



Western blot analysis of Erythropoietin / EPO Antibody (N-term) in K562 cell line lysates (35ug/lane). This demonstrates the Erythropoietin antibody detected the Erythropoietin protein (arrow).



Western blot analysis of Erythropoietin / EPO Antibody (N-term) in mouse L929 cell line lysates (35ug/lane). This demonstrates the Erythropoietin antibody detected the Erythropoietin protein (arrow).