

Product datasheet for **AP51460PU-N**

ERRFI1 (Center) Rabbit Polyclonal Antibody

Product data:

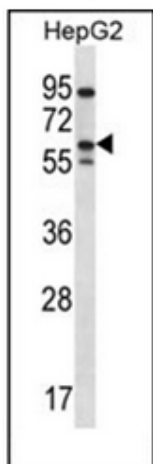
Product Type:	Primary Antibodies
Applications:	WB
Recommended Dilution:	ELISA: 1/1000. Western Blot: 1/100-1/500.
Reactivity:	Human
Host:	Rabbit
Isotype:	Ig
Clonality:	Polyclonal
Immunogen:	KLH conjugated synthetic peptide between 256-286 amino acids from the Central region of Human ERRFI1
Specificity:	This antibody recognizes Human ERRFI1 / MIG6 (Center).
Formulation:	PBS containing 0.09% (W/V) Sodium Azide as preservative State: Aff - Purified State: Liquid purified Ig fraction
Concentration:	lot specific
Purification:	Affinity Chromatography on Protein A
Conjugation:	Unconjugated
Storage:	Store undiluted at 2-8°C for one month or (in aliquots) at -20°C for longer. Avoid repeated freezing and thawing.
Stability:	Shelf life: one year from despatch.
Gene Name:	ERBB receptor feedback inhibitor 1
Database Link:	Entrez Gene 54206 Human Q9UJM3
Background:	ERRFI1 is a cytoplasmic protein whose expression is upregulated with cell growth (Wick et al., 1995 [PubMed 7641805]). It shares significant homology with the protein product of rat gene-33, which is induced during cell stress and mediates cell signaling (Makkinje et al., 2000 [PubMed 10749885]; Fiorentino et al., 2000 [PubMed 11003669]).
Synonyms:	GENE-33; MIG-6; MIG6; RALT



[View online »](#)

Note: **Molecular Weight:** 50560 Da

Product images:



Western blot analysis of ERRF1 / MIG6 Antibody in HepG2 cell line lysates (35ug/lane). This demonstrates the ERRF1 antibody detected the ERRF1 protein (arrow).