

Product datasheet for **AP51458PU-N**

Endoplasmic reticulum metalloproteinase 1 (ERMP1) (C-term) Rabbit Polyclonal Antibody

Product data:

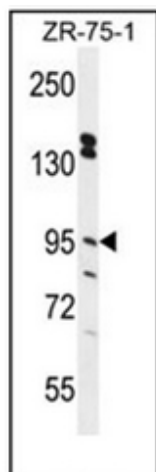
Product Type:	Primary Antibodies
Applications:	WB
Recommended Dilution:	ELISA: 1/1000. Western Blot: 1/100-1/500.
Reactivity:	Human
Host:	Rabbit
Isotype:	Ig
Clonality:	Polyclonal
Immunogen:	KLH conjugated synthetic peptide between 859-889 amino acids from the C-terminal region of Human ERMP1.
Specificity:	This antibody recognizes Human ERMP1 (C-term).
Formulation:	PBS containing 0.09% (W/V) Sodium Azide as preservative State: Aff - Purified State: Liquid purified Ig fraction
Concentration:	lot specific
Purification:	Affinity Chromatography on Protein A
Conjugation:	Unconjugated
Storage:	Store undiluted at 2-8°C for one month or (in aliquots) at -20°C for longer. Avoid repeated freezing and thawing.
Stability:	Shelf life: one year from despatch.
Gene Name:	endoplasmic reticulum metalloproteinase 1
Database Link:	Entrez Gene 79956 Human Q7Z2K6
Background:	Within the ovary, required for the organization of somatic cells and oocytes into discrete follicular structures (By similarity).
Synonyms:	FXNA, KIAA1815
Note:	Molecular Weight: 100231 Da



[View online »](#)

Protein Families: Protease, Transmembrane

Product images:



Western blot analysis of ERMP1 Antibody (C-term) in ZR-75-1 cell line lysates (35ug/lane). This demonstrates the ERMP1 antibody detected the ERMP1 protein (arrow).