

Product datasheet for **AP51457PU-N**

ERLIN1 (Center) Rabbit Polyclonal Antibody

Product data:

Product Type:	Primary Antibodies
Applications:	IHC, WB
Recommended Dilution:	ELISA: 1/1000. Western Blot: 1/100-1/500. Immunohistochemistry on Paraffin Sections: 1/10-1/50.
Reactivity:	Human
Host:	Rabbit
Isotype:	Ig
Clonality:	Polyclonal
Immunogen:	KLH conjugated synthetic peptide between 245-275 amino acids from the Central region of Human Erlin-1.
Specificity:	This antibody recognizes Human Erlin-1 (Center).
Formulation:	PBS containing 0.09% (W/V) Sodium Azide as preservative State: Aff - Purified State: Liquid purified Ig fraction
Concentration:	lot specific
Purification:	Affinity Chromatography on Protein A
Conjugation:	Unconjugated
Storage:	Store undiluted at 2-8°C for one month or (in aliquots) at -20°C for longer. Avoid repeated freezing and thawing.
Stability:	Shelf life: one year from despatch.
Gene Name:	ER lipid raft associated 1
Database Link:	Entrez Gene 10613 Human O75477
Background:	Component of the ERLIN1/ERLIN2 complex which mediates the endoplasmic reticulum-associated degradation (ERAD) of inositol 1,4,5-trisphosphate receptors (IP3Rs).
Synonyms:	ERLIN1, C10orf69, KE04, KEO4, SPFH1

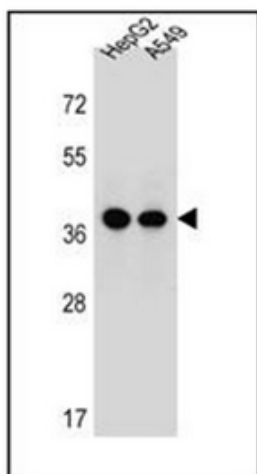


[View online »](#)

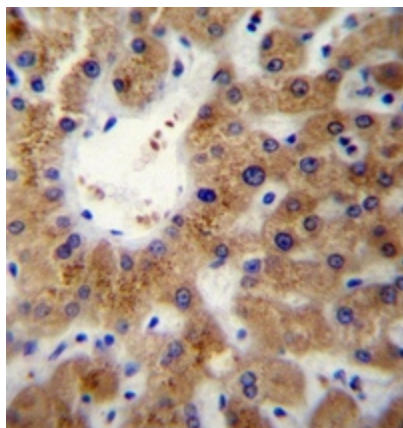
Note: **Molecular Weight:** 38926 Da

Protein Families: Transmembrane

Product images:



Western blot analysis of Erlin-1 Antibody in HepG2, A549 cell line lysates (35ug/lane). This demonstrates the ERLIN1 antibody detected the ERLIN1 protein (arrow).



Formalin fixed and paraffin embedded human liver tissue reacted with Erlin-1 Antibody followed by peroxidase conjugation of the secondary antibody and DAB staining.