

Product datasheet for **AP51456PU-N**

ERI2 (Center) Rabbit Polyclonal Antibody

Product data:

Product Type:	Primary Antibodies
Applications:	WB
Recommended Dilution:	ELISA: 1/1000. Western Blot: 1/100-1/500.
Reactivity:	Human
Host:	Rabbit
Isotype:	Ig
Clonality:	Polyclonal
Immunogen:	KLH conjugated synthetic peptide between 443-472 amino acids from the Central region of Human EXOD1
Specificity:	This antibody recognizes Human EXOD1 (Center).
Formulation:	PBS containing 0.09% (W/V) Sodium Azide as preservative State: Aff - Purified State: Liquid purified Ig fraction
Concentration:	lot specific
Purification:	Affinity Chromatography on Protein A
Conjugation:	Unconjugated
Storage:	Store undiluted at 2-8°C for one month or (in aliquots) at -20°C for longer. Avoid repeated freezing and thawing.
Stability:	Shelf life: one year from despatch.
Gene Name:	ERI1 exoribonuclease family member 2
Database Link:	Entrez Gene 112479 Human A8K979



[View online »](#)

Background:

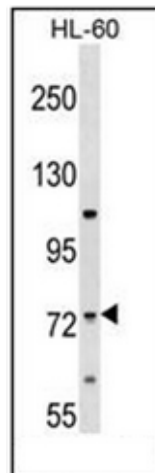
EXOD1 (Exonuclease domain-containing protein 1), also known as ERI2 (ERI1 exoribonuclease 2), is a 691 amino acid protein that contains one exonuclease domain, which catalyzes the hydrolysis of unpaired or mismatched nucleotides. EXOD1 activity is dependent on the binding of two magnesium ions per subunit. There are four isoforms of EXOD1 that are produced as a result of alternative splicing events. The gene encoding EXOD1 maps to human chromosome 16, which encodes over 900 genes and comprises nearly 3% of the human genome. The GAN gene is located on chromosome 16 and, with mutation, may lead to giant axonal neuropathy, a nervous system disorder characterized by increasing malfunction with growth. The rare disorder Rubinstein-Taybi syndrome is also associated with chromosome 16, as is Crohn's disease, which is a gastrointestinal inflammatory condition.

Synonyms:

Exonuclease domain-containing protein 1, KIAA1504, MGC16943

Note:

Molecular Weight: 77401 Da

Product images:

Western blot analysis of EXOD1 Antibody in HL-60 cell line lysates (35ug/lane). This demonstrates the EXOD1 antibody detected the EXOD1 protein (arrow).