

## Product datasheet for **AP51455PU-N**

### HEXO (ERI1) (N-term) Rabbit Polyclonal Antibody

#### Product data:

Product Type:	Primary Antibodies
Applications:	WB
Recommended Dilution:	<b>ELISA:</b> 1/1000. <b>Western Blot:</b> 1/100-1/500.
Reactivity:	Human
Host:	Rabbit
Isotype:	Ig
Clonality:	Polyclonal
Immunogen:	KLH conjugated synthetic peptide between 79-109 amino acids from the N-terminal region of Human ERI1
Specificity:	This antibody recognizes Human ERI1 / THEX1 (N-term).
Formulation:	PBS containing 0.09% (W/V) Sodium Azide as preservative State: Aff - Purified State: Liquid purified Ig fraction
Concentration:	lot specific
Purification:	Affinity Chromatography on Protein A
Conjugation:	Unconjugated
Storage:	Store undiluted at 2-8°C for one month or (in aliquots) at -20°C for longer. Avoid repeated freezing and thawing.
Stability:	Shelf life: one year from despatch.
Gene Name:	exoribonuclease 1
Database Link:	<a href="#">Entrez Gene 90459 Human Q8IV48</a>



[View online »](#)

**Background:**

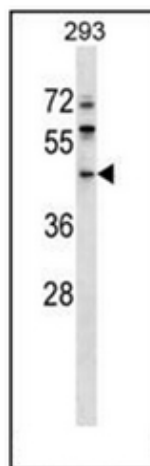
RNA exonuclease that binds to the 3'-end of histone mRNAs and degrades them, suggesting that it plays an essential role in histone mRNA decay after replication. A 2' and 3'-hydroxyl groups at the last nucleotide of the histone 3'-end is required for efficient degradation of RNA substrates. Also able to degrade the 3'-overhangs of short interfering RNAs (siRNAs) in vitro, suggesting a possible role as regulator of RNA interference (RNAi). Requires for binding the 5'-ACCCA-3' sequence present in stem-loop structure. Able to bind other mRNAs. Required for 5.8S rRNA 3'-end processing. Also binds to 5.8S ribosomal RNA. Binds with high affinity to the stem-loop structure of replication-dependent histone pre-mRNAs.

**Synonyms:**

3'-5' exoribonuclease 1, 3'EXO, HEXO

**Note:**

**Molecular Weight:** 40064 Da

**Product images:**

Western blot analysis of ERI1 / THEX1 (N-term) Antibody (N-term) in 293 cell line lysates (35ug/lane). This demonstrates the ERI1 antibody detected the ERI1 protein (arrow).