

## Product datasheet for **AP51454PU-N**

### ERH (N-term) Rabbit Polyclonal Antibody

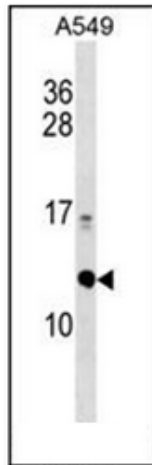
#### Product data:

Product Type:	Primary Antibodies
Applications:	WB
Recommended Dilution:	<b>ELISA:</b> 1/1000. <b>Western Blot:</b> 1/100-1/500.
Reactivity:	Human
Host:	Rabbit
Isotype:	Ig
Clonality:	Polyclonal
Immunogen:	KLH conjugated synthetic peptide between 1-30 amino acids from the N-terminal region of Human ERH.
Specificity:	This antibody recognizes Human ERH (N-term).
Formulation:	PBS containing 0.09% (W/V) Sodium Azide as preservative State: Aff - Purified State: Liquid purified Ig fraction
Concentration:	lot specific
Purification:	Affinity Chromatography on Protein A
Conjugation:	Unconjugated
Storage:	Store undiluted at 2-8°C for one month or (in aliquots) at -20°C for longer. Avoid repeated freezing and thawing.
Stability:	Shelf life: one year from despatch.
Gene Name:	enhancer of rudimentary homolog (Drosophila)
Database Link:	<a href="#">Entrez Gene 2079 Human P84090</a>
Background:	ERH may have a role in the cell cycle.
Synonyms:	Enhancer of rudimentary homolog
Note:	<b>Molecular Weight:</b> 12259 Da

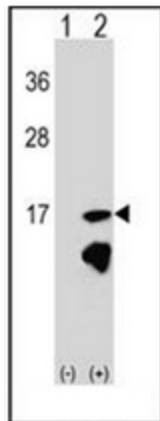


[View online »](#)

Product images:



Western blot analysis of ERH Antibody (N-term) in A549 cell line lysates (35ug/lane). This demonstrates the ERH antibody detected the ERH protein (arrow).



Western blot analysis of ERH (arrow) using ERH Antibody (N-term). 293 cell lysates (2 ug/lane) either nontransfected (Lane 1) or transiently transfected (Lane 2) with the ERH gene.