

Product datasheet for **AP51453PU-N**

ERGIC3 (N-term) Rabbit Polyclonal Antibody

Product data:

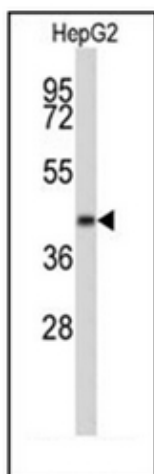
Product Type:	Primary Antibodies
Applications:	IHC, WB
Recommended Dilution:	ELISA: 1/1000. Western Blot: 1/100-1/500. Immunohistochemistry on Paraffin Sections: 1/50-1/100.
Reactivity:	Human
Host:	Rabbit
Isotype:	Ig
Clonality:	Polyclonal
Immunogen:	KLH conjugated synthetic peptide between 1~30 amino acids from the N-terminal region of Human ERGIC3
Specificity:	This antibody recognizes Human ERGIC3 (N-term).
Formulation:	PBS containing 0.09% (W/V) Sodium Azide as preservative State: Aff - Purified State: Liquid purified Ig fraction
Concentration:	lot specific
Purification:	Affinity Chromatography on Protein A
Conjugation:	Unconjugated
Storage:	Store undiluted at 2-8°C for one month or (in aliquots) at -20°C for longer. Avoid repeated freezing and thawing.
Stability:	Shelf life: one year from despatch.
Gene Name:	ERGIC and golgi 3
Database Link:	Entrez Gene 51614 Human Q9Y282
Background:	ERGIC3 is possible role in transport between endoplasmic reticulum and Golgi.
Synonyms:	C20orf47, ERV46, SDBCAG84, CGI-54, PRO0989, NY-BR-84
Note:	Molecular Weight: 43222 Da



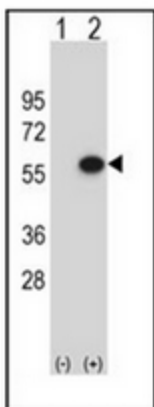
[View online »](#)

Protein Families: Transmembrane

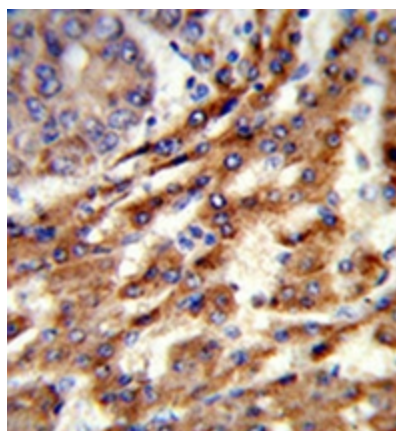
Product images:



Western blot analysis of ERGIC3 Antibody (N-term) in HepG2 cell line lysates (35ug/lane). ERGIC3 (arrow) was detected using the purified Pab.



Western blot analysis of ERGIC3 (arrow) using ERGIC3 Antibody (N-term). 293 cell lysates (2 ug/lane) either nontransfected (Lane 1) or transiently transfected (Lane 2) with the ERGIC3 gene.



Formalin-fixed and paraffin-embedded human hepatocarcinoma reacted with ERGIC3 Antibody (N-term), which was peroxidase-conjugated to the secondary antibody, followed by DAB staining.