

Product datasheet for **AP51452PU-N**

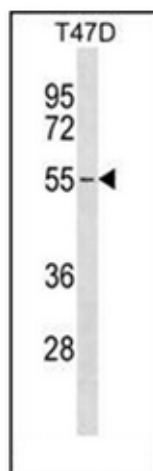
ERGIC2 (C-term) Rabbit Polyclonal Antibody

Product data:

| | |
|-----------------------|-------------------------------------------------------------------------------------------------------------------------------------------------|
| Product Type: | Primary Antibodies |
| Applications: | WB |
| Recommended Dilution: | ELISA: 1/1000. Western Blot: 1/100-1/500. |
| Reactivity: | Human |
| Host: | Rabbit |
| Isotype: | Ig |
| Clonality: | Polyclonal |
| Immunogen: | KLH conjugated synthetic peptide between 334-362 amino acids from the C-terminal region of Human ERGIC2 |
| Specificity: | This antibody recognizes Human ERGIC2 (C-term). |
| Formulation: | PBS containing 0.09% (W/V) Sodium Azide as preservative State: Aff - Purified State: Liquid purified Ig fraction |
| Concentration: | lot specific |
| Purification: | Affinity Chromatography on Protein A |
| Conjugation: | Unconjugated |
| Storage: | Store undiluted at 2-8°C for one month or (in aliquots) at -20°C for longer. Avoid repeated freezing and thawing. |
| Stability: | Shelf life: one year from despatch. |
| Gene Name: | ERGIC and golgi 2 |
| Database Link: | Entrez Gene 51290 Human Q96RQ1 |
| Background: | ERGIC2, or PTX1, is a ubiquitously expressed nuclear protein that is downregulated in prostate carcinoma (Kwok et al., 2001 [PubMed 11445006]). |
| Synonyms: | ERV41, PTX1, CDA14 |
| Note: | Molecular Weight: 42549 Da |



[View online »](#)

Product images:

Western blot analysis of ERGIC2 Antibody (C-term) in T47D cell line lysates (35ug/lane). This demonstrates the ERGIC2 antibody detected the ERGIC2 protein (arrow).